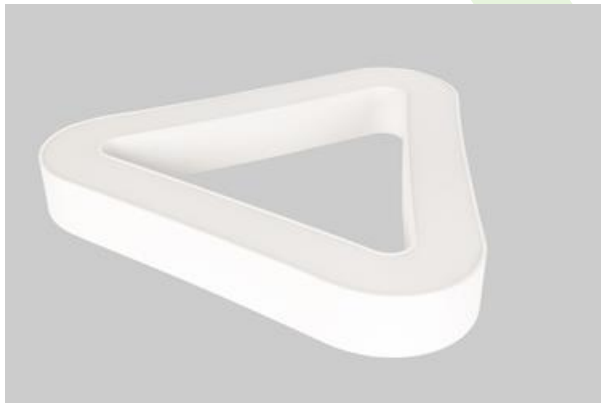


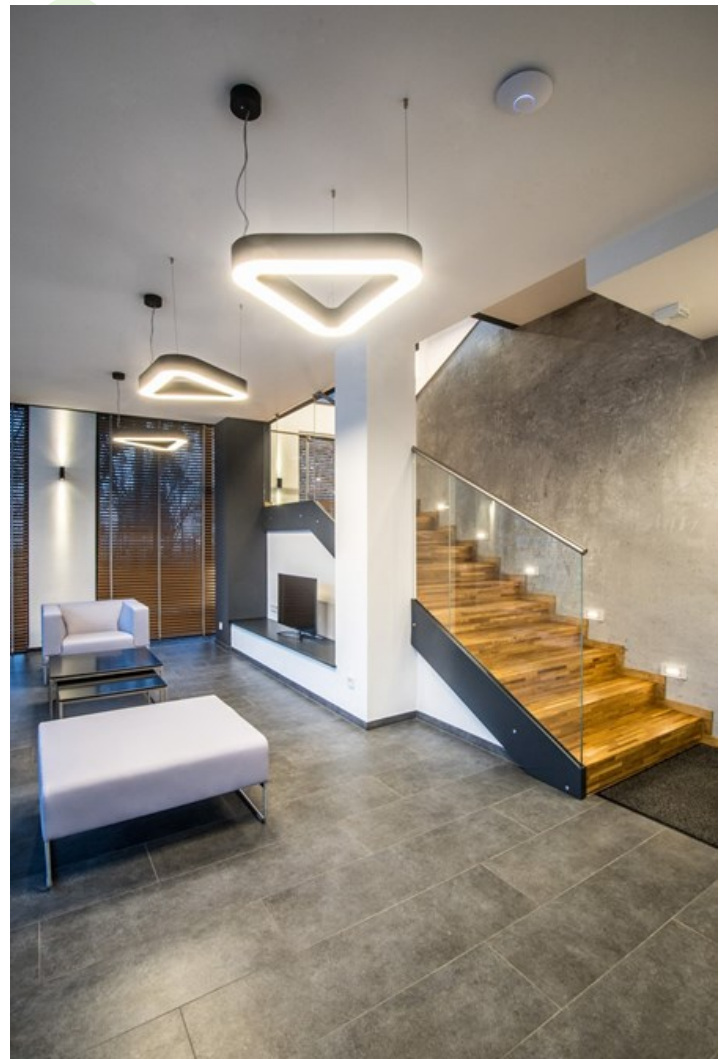


ARTSHAPE THREE LED

Architectural luminaires



Modernistic architectural luminaire in shapes of popular geometrical figures and fashionable design of simple form. The luminaire is adjusted to be mounted on the ceiling or suspended. It is equipped with highly efficient LED light sources. Various options of luminous flux and colour temperature are available. The sides of the shade are made of thin-walled aluminium profile. In combination with a possibility of painting according to RAL palette, the luminaires allow to achieve a unique arrangement of various premises. Perfectly even surface-emitting is made of material which has very good light transmittance factor and has good diffusion parameters. This luminaire is dedicated to room of high stylistic requirements. It is perfect for hotel atrium, office receptions, architectural studios, conference rooms or halls and corridors in exclusive buildings as well as for theatres or modern shops in shopping centres.



3D PRO office, Łódź

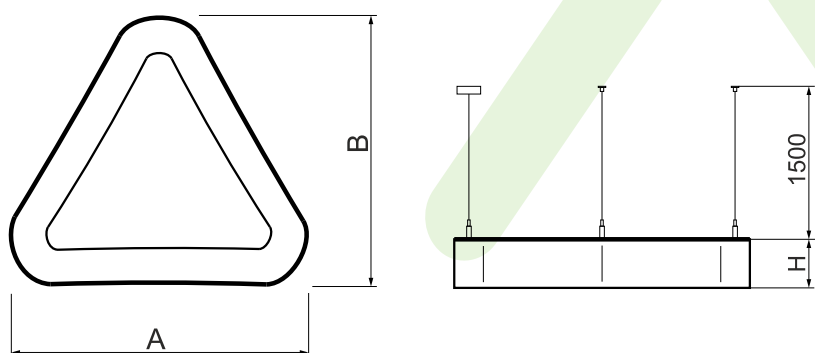
Pictograms:



Main parameters:

Name	Luminous flux LED [lm]	Power of luminaire [W]	Color [K]	Dimensions A x B x H [mm]
ARTSHAPE THREE LED SMALL EDGE 3000	2970	25	4000	630 x 575 x 80÷90
ARTSHAPE THREE LED SMALL EDGE 6000	5681 / 5940	50	3000 / 4000	630 x 575 x 80÷90
ARTSHAPE THREE LED SMALL FULL 6000	6192	50	4000	630 x 575 x 80÷90
ARTSHAPE THREE LED MEDIUM EDGE 4500	4262 / 4455	35	3000 / 4000	900 x 809 x 80÷90
ARTSHAPE THREE LED MEDIUM EDGE 9000	8910	70	4000	900 x 809 x 80÷90
ARTSHAPE THREE LED LARGE EDGE 6000	5940	50	4000	1170 x 1043 x 80÷90
ARTSHAPE THREE LED LARGE EDGE 12000	11880	92	4000	1170 x 1043 x 80÷90
ARTSHAPE THREE LED SMALL EDGE TW 4000	3960	38	2700 ÷ 6500	630 x 575 x 80÷90
ARTSHAPE THREE LED MEDIUM EDGE TW 6000	5880	57	2700 ÷ 6500	900 x 809 x 80÷90
ARTSHAPE THREE LED LARGE EDGE TW 8000	8040	77	2700 ÷ 6500	1170 x 1043 x 80÷90
ARTSHAPE THREE LED SMALL EDGE UP&DOWN 2800/6000	2888/5940	75	4000	630 x 575 x 80÷90
ARTSHAPE THREE LED SMALL FULL UP&DOWN 2800/6000	2888/6192	73	4000	630 x 575 x 80÷90
ARTSHAPE THREE LED MEDIUM EDGE UP&DOWN 4000/9000	4104/8910	105	4000	900 x 809 x 80÷90
ARTSHAPE THREE LED MEDIUM FULL UP&DOWN 4000/11000	4104/10894	122	4000	900 x 809 x 80÷90
ARTSHAPE THREE LED LARGE EDGE UP&DOWN 5000/12000	5320/11880	135	4000	1170 x 1043 x 80÷90
ARTSHAPE THREE LED LARGE FULL UP&DOWN 5000/16000	5320/16338	175	4000	1170 x 1043 x 80÷90

Technical drawing:



Light and electrical features:

Light source	LED
Voltage	220..240 V, 50..60 Hz
Lifetime of LED sources [h]	60000/35000
Lx/By	L80/B10
CRI	>80
SDCM (LED sources)	3/4
Photobiological risk class (IEC/EN 62471)	RG0
Operating temperature range [°C]	5 ÷ 30
Driver	standard (E) DIM DALI (EDD) *

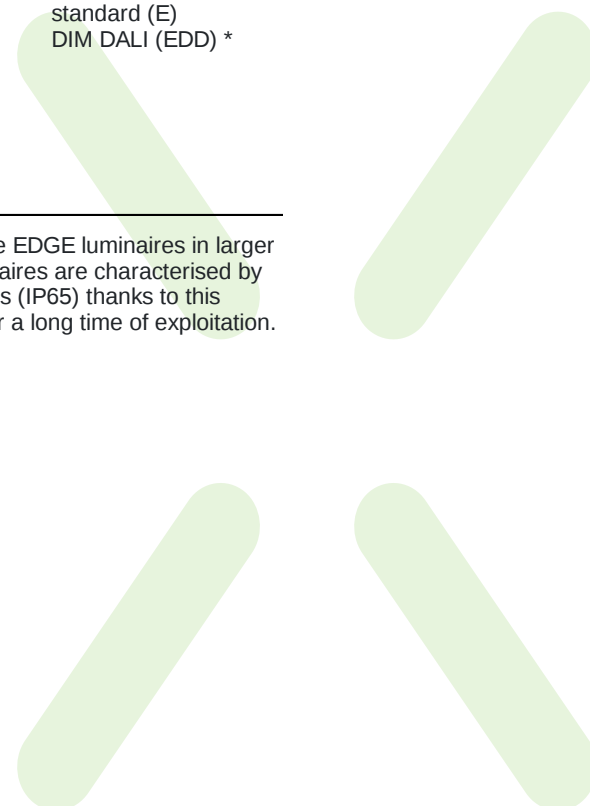
* Variant to specify when ordering

Additional information:

On individual request it is possible to make EDGE luminaires in larger sizes and in RGBW versions. These luminaires are characterised by tightly closed chamber of LED light sources (IP65) thanks to this impurities are not visible on the diffuser for a long time of exploitation.

Mechanical features:

Assembly	directly mounted to ceiling construction or surface mounted on slings surface mounted on slings
Material	aluminum
Color	RAL 9016 (white)
Diffuser	PLX (PMMA opal)



Note: The power shown refers to the whole system (tolerance +/- 10%).
The given luminous flux refers to LED light sources (tolerance +/- 10% depends on the value of the colour temperature).
Technical data may be changed. Photos of the luminaires may differ from reality.
Date of last update: 11-05-2020

