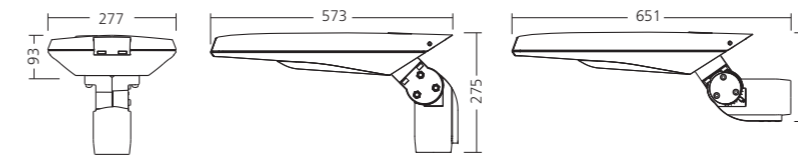
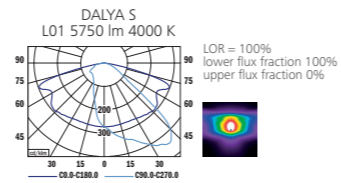


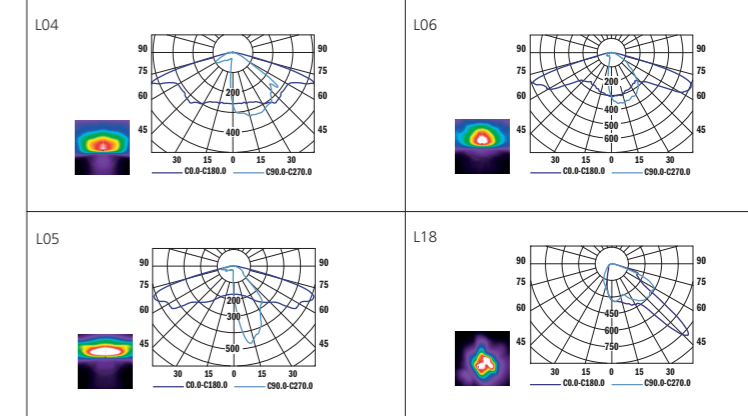
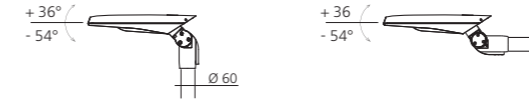
DALYA
LENSES
LED



PHOTOMETRY



MOUNTING

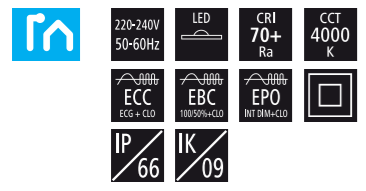


TYPE	NET LUMEN OUTPUT (at Ta = 25 °C) (lm)	POWER CONSUMPTION INITIAL (W)	POWER CONSUMPTION END 5L* (W)	SYSTEM EFFICACY INITIAL (lm/W)	COLOUR RENDERING INDEX CRI (Ra)	CORRELATED COLOUR TEMPERATURE CCT (K)	WINDAGE AREA SIDE / TOP (m²)	WEIGHT (kg)	RECOMENDED MOUNTING HEIGHT (m)	ORDER CODE		
										ECC	EBC	EPO
DALYA S	1800	15	16	120	70+	4000	0.035/0.140	8.2	5-8	807003	807002	807004
DALYA S	2900	24	26	121	70+	4000	0.035/0.140	8.2	5-8	807019	807018	807020
DALYA S	3850	31	34	124	70+	4000	0.035/0.140	8.2	5-8	807015	807014	807016
DALYA S	4900	41	45	120	70+	4000	0.035/0.140	8.2	5-8	807006	807005	807007
DALYA S	5750	49	54	117	70+	4000	0.035/0.140	8.2	7-10	807011	807010	807012

Luminous flux tolerance +/- 10%
* Service Lifetime

Dalya S

COMMERCIAL LED LUMINAIRES



EN	DE	FR	SK	ES	IT	RU
<p>Mounting Pole-top/side entry installation (PMT)</p> <p>Optical system Lenses (L01) On request: L02, L03, L04, L05, L06, L07, L08, L09, L10, L11, L12, L18</p> <p>Wiring Electronic control gear FIX/STEP DIM/INT DIM + CONSTANT LUMEN OUTPUT (ECC/EBC/EPO) External lead-in flexible cable</p> <p>Materials Housing: die-cast aluminium Cover: transparent hardened glass Frame: sheet steel Tilttable spigot: die-cast aluminium (on request Ø76)</p> <p>Surface finish Housing: grey RAL 9006 (G06)</p> <p>Service lifetime 100,000 hours/L100/B10 (ta 25°C)</p> <p>Ambient temperature From -40 °C to +50 °C</p>	<p>Montage Aufsatz-/Seitenansatz-Installation (PMT)</p> <p>Optisches System Lentilles (L01) Auf Anfrage: L02, L03, L04, L05, L06, L07, L08, L09, L10, L11, L12, L18</p> <p>Vorschaltgerät Elektronisches Vorschaltgerät FIX/STEP DIM/INT DIM + CONSTANT LUMEN OUTPUT (ECC/EBC/EPO) Externes Anschlusskabel</p> <p>Material Körper: Aluminiumdruckguss Abdeckung: durchsichtiger gehärteter Glas Rahmen: Stahlblech Schwenkbarer Zapfen: Aluminiumdruckguss (Auf Anfrage Ø76)</p> <p>Oberflächenveredelung Körper: grau RAL 9006 (G06)</p> <p>Lebensdauer 100,000 Stunden/L100/B10 (ta 25°C)</p> <p>Umgebungstemperatur Von -40 °C bis +50 °C</p>	<p>Montage Installation supérieur du pôle/d'entrée latérale (PMT)</p> <p>Système optique Lentilles (L01) Sur demande: L02, L03, L04, L05, L06, L07, L08, L09, L10, L11, L12, L18</p> <p>Équipement électrique Ballast électronique FIX/STEP DIM/INT DIM + CONSTANT LUMEN OUTPUT (ECC/EBC/EPO) Artère externe</p> <p>Matériels Corps: aluminium moulé sous pression Couvercle: verre trempé transparente Cadre: tôle d'acier Ergot inclinable: aluminium moulé sous pression (sur demande Ø76)</p> <p>Finition de surface Corps: gris RAL 9006 (G06)</p> <p>Durée de vie utile 100,000 heures/L100/B10 (ta 25°C)</p> <p>Température ambiante De -40 °C à +50 °C</p>	<p>Montáž Montáž na stĺp/zo strany (PMT)</p> <p>Optický systém Šošovky (L01) Na požiadanie: L02, L03, L04, L05, L06, L07, L08, L09, L10, L11, L12, L18</p> <p>Elektrická výbava Elektronický predradník FIX/STEP DIM/INT DIM + CONSTANT LUMEN OUTPUT (ECC/EBC/EPO) Prívodný napájací kábel</p> <p>Material Teleso: hliníkový odliatok Kryt: transparentné tvrdené sklo Rám: oceľový plech Sklopný nástavec: hliníkový odliatok (na požiadanie Ø76)</p> <p>Povrchová úprava Teleso: šedá RAL 9006 (G06)</p> <p>Service životnosť 100,000 hodín/L100/B10 (ta 25°C)</p> <p>Teplota okolia Od -40 °C do +50 °C</p>	<p>Montaje Instalación en poste superior/de acceso lateral (PMT)</p> <p>Sistema óptico Lentes (L01) A petición: L02, L03, L04, L05, L06, L07, L08, L09, L10, L11, L12, L18</p> <p>Cableado Equipo de control electrónico FIX/STEP DIM/INT DIM + CONSTANT LUMEN OUTPUT (ECC/EBC/EPO) Cable alimentador externo</p> <p>Material Cuerpo: aluminio moldeado Cubierta: cristal endurecido transparente Marco: lámina de acero Espiga inclinable: aluminio moldeado (a petición Ø76)</p> <p>Tratamiento de la superficie Cuerpo: gris RAL 9006 (G06)</p> <p>Vida útil 100,000 horas/L100/B10 (ta 25°C)</p> <p>Temperatura ambiente Desde -40 °C a +50 °C</p>	<p>Installazione Installazione testa palo/ingresso laterale (PMT)</p> <p>Sistema ottico Lenti (L01) Su richiesta: L02, L03, L04, L05, L06, L07, L08, L09, L10, L11, L12, L18</p> <p>Cablaggio Ballast elettronico FIX/STEP DIM/INT DIM + CONSTANT LUMEN OUTPUT (ECC/EBC/EPO) Cavetto di alimentazione esterno</p> <p>Materiali Corpo: pressofusione di alluminio Copertura: vetro temperato trasparente Cornice: lamina d'acciaio Perno inclinabile: pressofusione di alluminio (su richiesta Ø76)</p> <p>Finitura Corpo: grigio RAL 9006 (G06)</p> <p>Durata di vita 100,000 ore/L100/B10 (ta 25°C)</p> <p>Temperatura d'ambiente Da -40 °C a +50 °C</p>	<p>Установка Установка на верхушке мачты / со стороны ввода (PMT)</p> <p>Оптическая система Линзы (L01) По запросу: L02, L03, L04, L05, L06, L07, L08, L09, L10, L11, L12, L18</p> <p>Электрическое оснащение Электронный аппарат FIX/STEP DIM/INT DIM + CONSTANT LUMEN OUTPUT (ECC/EBC/EPO) Внешний свинца в гибком кабеле</p> <p>Материал Корпус: литой алюминий Крышка: чистое закаленное стекло Каркас: листовая сталь Поворотный патрубков: литой алюминий (по запросу Ø76)</p> <p>Отделка поверхности Корпус: серый RAL 9006 (G06)</p> <p>Срок службы 100,000 часов/L100/B10 (ta 25°C)</p> <p>Температура окружающей среды От -40 °C до +50 °C</p>

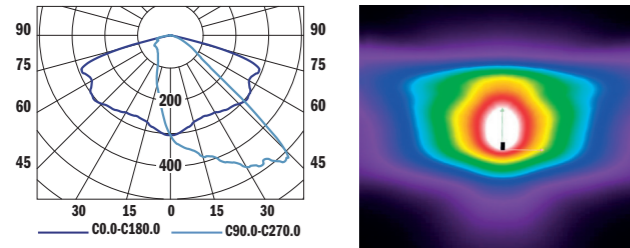


THE MANUFACTURER CONTINUES TO DEVELOP PRODUCTS THROUGHOUT THEIR LIFETIME. THEREFORE, THE COMPANY RESERVES THE RIGHT TO MODIFY MATERIALS, COMPONENTS, AND TECHNICAL PARAMETERS WITHOUT NOTICE. LUMINOUS OUTPUT AND ELECTRICAL LOAD HAVE AN INITIAL TOLERANCE OF +/- 10 % FROM NOMINAL. FAILURE OF ONE LED LIGHT POINT WITHIN A LUMINAIRE DOES NOT IMPAIR FUNCTIONAL PERFORMANCE AND SO IS NOT CLASSIFIED AS REASON FOR COMPLAINT.

Low-glare lens optics that deliver any of 13 different LDCs means there is a DALYA for any application – from roads and pavements through squares and paths to junctions and pedestrian crossings.

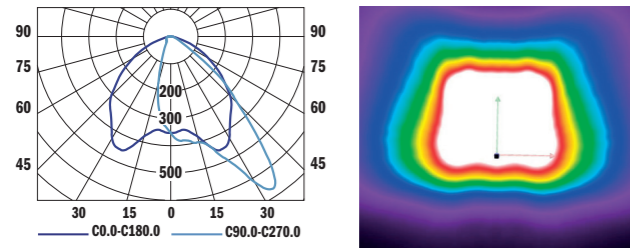


L01
Determined for the illumination of streets with or without pavements. Light is distributed in front and to the sides of the luminaire, but not behind so as to minimise light pollution.

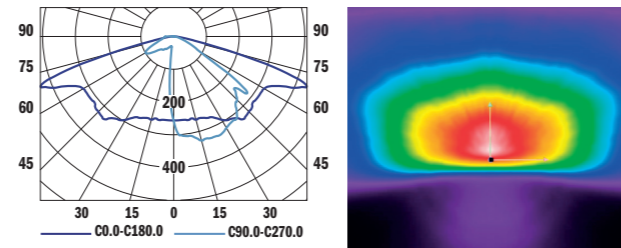


Optical system has been carefully designed by experienced optical engineers to ensure its suitability for areas where glare control is important according to Luminous Intensity Classification EN 13201-1 Appendix A1.

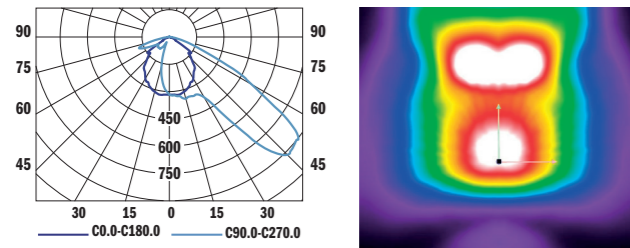
L02
Determined for the illumination of wide streets or similar areas. Light is distributed predominantly in front of the luminaire so as to reach further, as to minimise light pollution.



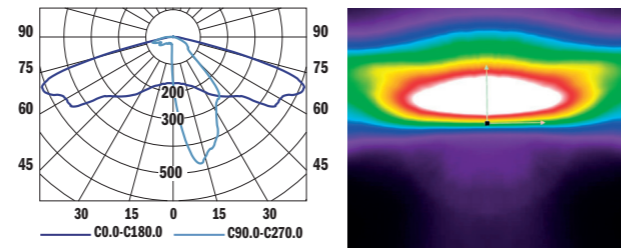
L04
Determined for the illumination of streets with or without pavements. Light is distributed in front and to the sides of the luminaire, but not behind so as to minimise light pollution.



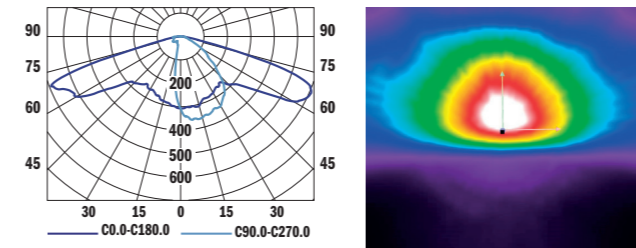
L03
Determined for the illumination of wide streets or similar areas. Light is distributed predominantly in front of the luminaire so as to reach further.



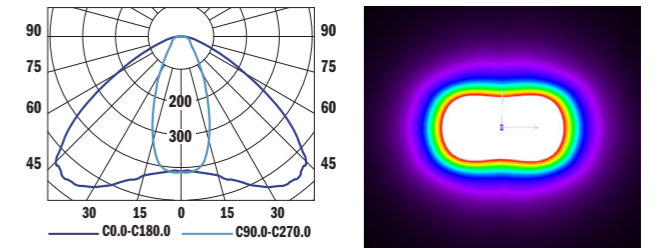
L05
Determined for the illumination of streets with or without pavements. Light is distributed in front and to the sides of the luminaire, but not behind so as to minimise light pollution.



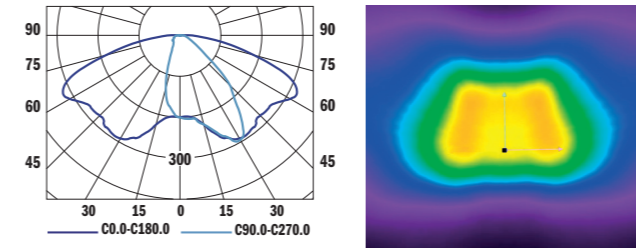
L06
Determined for the illumination of streets with or without pavements. Light is distributed in front and to the sides of the luminaire, but not behind so as to minimise light pollution.



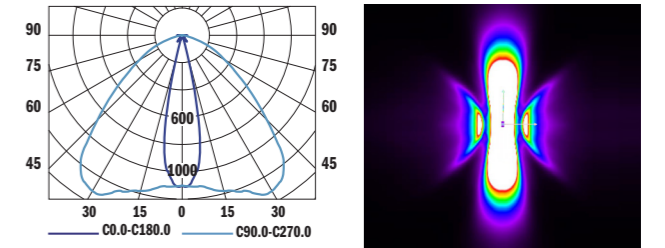
L10
Determined for the illumination of open spaces such as squares and parks. Light is distributed in all directions.



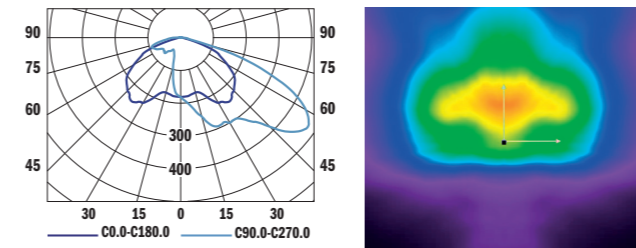
L07
Determined for the illumination of streets with or without pavements. Light is distributed in front and to the sides of the luminaire, but not behind so as to minimise light pollution.



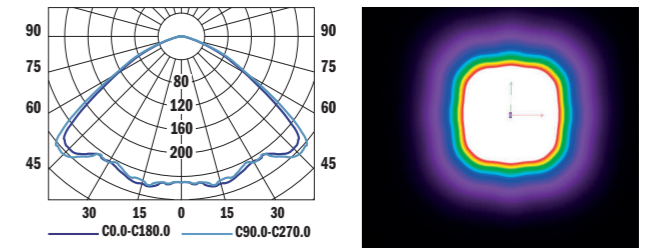
L11
Determined for the illumination of pathways where luminaires are located centrally. Light is distributed to either side of the luminaire.



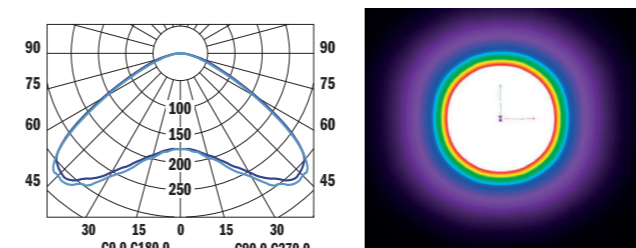
L08
Determined for the illumination of streets with or without pavements. Light is distributed in front and to the sides of the luminaire, but not behind so as to minimise light pollution.



L12
Determined for the illumination of open spaces such as squares and parks. Light is distributed in all directions.



L09
Determined for the illumination of streets with or without pavements. Light is distributed in front and to the sides of the luminaire, but not behind so as to minimise light pollution.



L18
Determined for the illumination of pedestrian crossings. Light is focused on waiting and crossing pedestrians, and not elsewhere on the street or pavement, to maximise contrast and identification.

