

# PRODUCT DATASHEET

## TRACK SP D85 35 W 4000 K 90RA NFL GY

TRACKLIGHT SPOT D85 35W | 3-phase tracklight spot with integrated control gear, medium wattage



### AREAS OF APPLICATION

- Direct replacement for luminaires using HID lamps
- Accent lighting
- Fashion shops, accessories shops
- Retail
- Hotels, restaurants, shops

### PRODUCT BENEFITS

- Included 3-phase adapter compatible with common tracks (STAFF, NORLUX, GLOBAL, NUCO, NORDIC)
- Deep reflector and black antiglare ring for minimized glare (UGR <16)
- Reflector easily replaceable thanks to bayonet catch and rubber suction pad
- No distraction of attention from the illuminated objects thanks to reduced design
- Low flicker light thanks to special electronic control gear
- 5 years guarantee

### PRODUCT FEATURES

- Compact tracklight spot with integrated control gear
- Rotation angle: 350°, tilt angle: 90°
- Luminaire efficacy: up to 80 lm/W
- Available with color temperature 3000 K or 4000 K
- Very good color rendering index  $R_a$ : > 90
- Color rendering index  $R_a$ 9: > 50



- Initial color consistency:  $\leq 3$  SDCM
- Equipped with reflectors with 24° beam angle
- Follows the unified LEDVANCE design language (SCALE design)
- Robust die-cast aluminum housing
- Available in matt white (like RAL9016), matt black (like RAL9004) and concrete grey (like RAL7042)

**TECHNICAL DATA**

Electrical data

Nominal wattage	35.00 W
Operating mode	Integrated LED driver
Nominal voltage	220...240 V
Mains frequency	50/60 Hz
Power factor $\lambda$	$\geq 0.90$

Luminaire control gear data

Max. no. of lum. on circuit break. B16 A	30
Max. no. of lum. on circuit break. C10 A	24
Max. no. of lum. on circuit break. C16 A	38

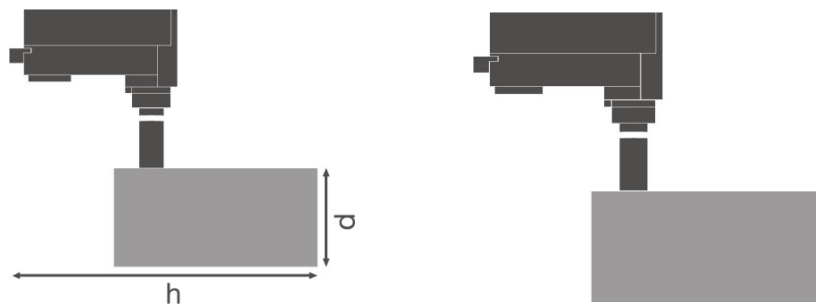
Photometrical data

Color temperature	4000 K
Color rendering index Ra	>90
Light color (designation)	Cool White
Luminous flux	2800 lm
Luminous efficacy	75 lm/W
Standard deviation of color matching	$\leq 3$ sdcM

Light technical data

Beam angle	24 °
------------	------

Dimensions & weight



<b>Diameter</b>	85.0 mm
<b>Height</b>	267.0 mm
<b>Product weight</b>	1020.00 g

#### Colors & materials

<b>Housing color</b>	Gray
<b>Product color</b>	Gray
<b>Body material</b>	Aluminum
<b>Cover material</b>	Polymethylmethacrylate (PMMA)

#### Temperatures & operating conditions

<b>Ambient temperature range</b>	-10...40 °C
----------------------------------	-------------

#### Lifespan

<b>Lifespan L70 at 25 °C</b>	50000 h
<b>Lifespan L80 at 25 °C</b>	45000 h
<b>Lifespan L90 at 25 °C</b>	30000 h

#### Additional product data

<b>Mounting type</b>	Surface
<b>Mounting location</b>	Mounting track

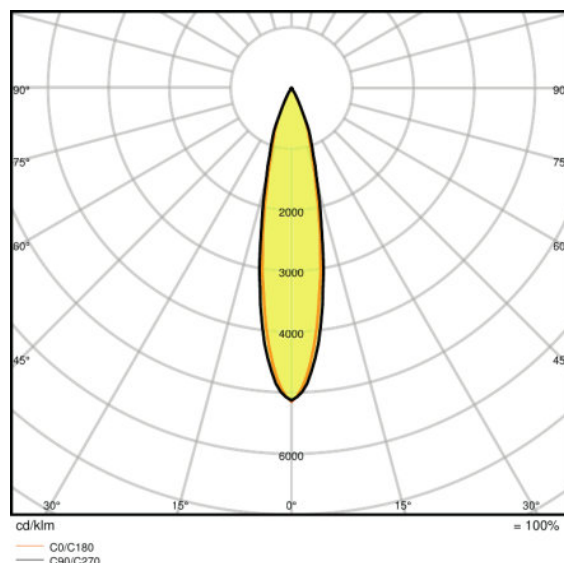
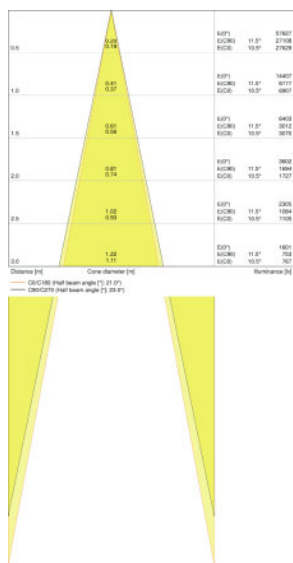
#### Capabilities

<b>Dimmable</b>	No
<b>Type of connection</b>	Adapter, 3-phasig
<b>LED module replaceable</b>	Not replaceable

#### Certificates & standards

<b>Type of protection</b>	IP20
<b>Protection class</b>	II
<b>Protection class IK (shock resistance)</b>	IK03
<b>Glow Wire Test according to IEC 695-2-1</b>	650 °C
<b>Photobiological safety group</b>	RG 1
<b>Standards</b>	CE/CB/ENEC/TÜV SÜD/EAC/RoHS

Light Distribution



LDC typ cone

LDC typ polar

EQUIPMENT / ACCESSORIES

- Accessory reflectors with 15° or 38° beam angle available

LOGISTICAL DATA

Product code	Product description	Packaging unit (Pieces/Unit)	Dimensions (length x width x height)	Volume	Gross weight
4058075113749	TRACK SP D85 35 W 4000 K 90RA NFL GY	Shipping carton box 4	495 mm x 130 mm x 310 mm	19.95 dm <sup>3</sup>	4794.00 g

The mentioned product code describes the smallest quantity unit which can be ordered. One shipping unit can contain one or more single products. When placing an order, for the quantity please enter single or multiples of a shipping unit.

REFERENCES / LINKS

For Guarantee see  
 ▶ [www.ledvance.com/guarantee](http://www.ledvance.com/guarantee)

DISCLAIMER

Subject to change without notice. Errors and omission excepted. Always make sure to use the most recent release.