

PRODUCT DATASHEET

LN INDV D/I 1500 56 W 3000 K S

LINEAR IndiviLED DIRECT/INDIRECT SENSOR | Pendant luminaire for single luminaire or light line application with sensor function

AREAS OF APPLICATION

- Direct replacement for luminaires with fluorescent lamps
- Offices, schools
- General indoor illumination
- Corridors, entrance areas
- Seamless linear lighting
- Shop lighting

PRODUCT BENEFITS

- Homogenous light distribution and reduced glare thanks to the IndiviLED optics
- Allows for energy savings and comfortable operation due to sensor control
- Increased light comfort thanks to direct and indirect light emission
- Low flicker light thanks to special electronic control gear
- Energy savings of up to 50 % compared to T5 batten luminaires
- Robust structure with IK06

PRODUCT FEATURES

- Each LED with individual lens and reflector for UGR<16 and homogenous light distribution
- Motion sensor (microwave technology) with adjustable detection parameters
- Additional module for indirect lighting with 850 lm
- Pendant mounting with suspension kit
- Linkable to an esthetic seamless light line with line connection adapter (surface or pendant mounting)
- Available with length of 1200 or 1500 mm



- Luminous flux up to 6550 lm
- Luminous efficacy: up to 120 lm/W
- Initial color consistency: < 4 SDCM
- Glow Wire Test according to IEC 60695-2-12: 850 °C

TECHNICAL DATA

Electrical data

| | |
|--|-----------------------|
| Nominal wattage | 56.00 W |
| Operating mode | Integrated LED driver |
| Nominal voltage | 220...240 V |
| Power factor λ | >0.90 |
| Mains frequency | 50/60 Hz |

Photometrical data

| | |
|---|------------|
| Color temperature | 3000 K |
| Luminous flux | 6150 lm |
| Luminous efficacy | 110 lm/W |
| Standard deviation of color matching | <4 sdcM |
| Light color (designation) | Warm White |
| Color rendering index Ra | ≥80 |

Light technical data

| | |
|-------------------------|------|
| Beam angle | 70 ° |
| UGR lateral | <16 |
| UGR longitudinal | <16 |

Luminaire sensor data

| | |
|---|------------------------|
| Type of sensor | Motion / Light |
| Sensor technology | Microwave |
| Sensor detection angle | 110 ° |
| Detection range of motion sensor | 8 m |
| Detection threshold of daylight sensor | 25 lx |
| Sensor controlled switching time | 5 s/1 min/3 min/10 min |
| Sensor IP rating | IP20 |

Dimensions & weight



| | |
|-----------------------|-----------|
| Length | 1518 mm |
| Width | 120.0 mm |
| Height | 40.0 mm |
| Product weight | 3300.00 g |

Colors & materials

| | |
|-----------------------|-----------|
| Body material | Aluminum |
| Housing color | White |
| Product color | White |
| Cover material | Aluminium |

Temperatures & operating conditions

| | |
|----------------------------------|-------------|
| Ambient temperature range | -20...45 °C |
|----------------------------------|-------------|

Lifespan

| | |
|------------------------------|---------|
| Lifespan L70 at 25 °C | 60000 h |
| Lifespan L80 at 25 °C | 50000 h |
| Lifespan L90 at 25 °C | 35000 h |

Additional product data

| | |
|--------------------------|-----------|
| Mounting type | Suspended |
| Mounting location | Ceiling |

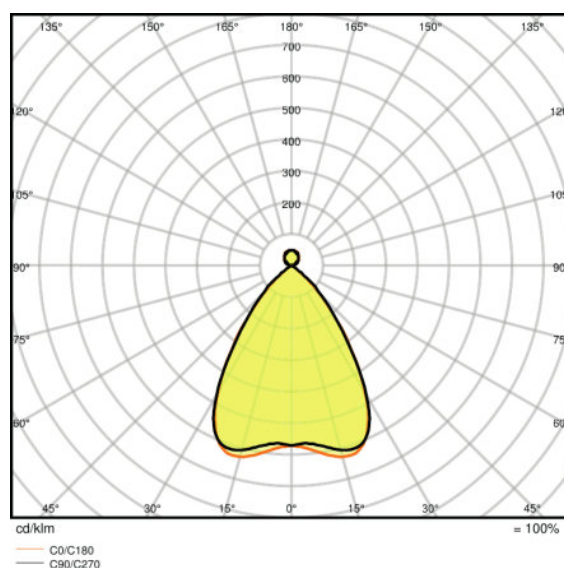
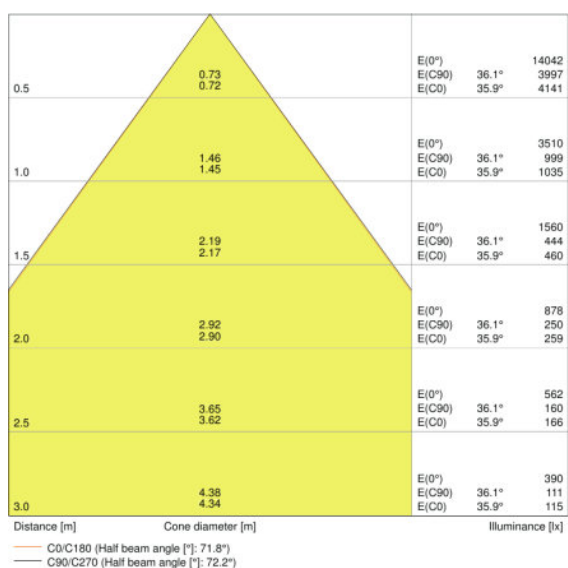
Capabilities

| | |
|-------------------------------|--------------------|
| Dimmable | No |
| Type of connection | Screwless terminal |
| LED module replaceable | Not replaceable |
| Ball shot safe | No |

Certificates & standards

| | |
|---|------------------------|
| Protection class IK (shock resistance) | IK06 |
| Glow Wire Test according to IEC 695-2-1 | 650 °C |
| Photobiological safety group | RG 0 |
| Photobio. safety group acc. to EN62471 | RG 0 |
| Protection class | I |
| Type of protection | IP20 |
| Standards | CE/CB/TÜV SÜD/EAC/RoHS |

Light Distribution



LDC typ cone

LDC typ polar

EQUIPMENT / ACCESSORIES

- Ceiling connection box available
- Suspension kit available
- Line connection adapter available
- Through-wiring cable kit available

LOGISTICAL DATA

| Product code | Product description | Packaging unit (Pieces/Unit) | Dimensions (length x width x height) | Volume | Gross weight |
|---------------|--------------------------------|------------------------------|--------------------------------------|-----------------------|--------------|
| 4058075109483 | LN INDV D/I 1500 56 W 3000 K S | Shipping carton box 4 | 1641 mm x 207 mm x 169 mm | 57.41 dm ³ | 15698.00 g |

The mentioned product code describes the smallest quantity unit which can be ordered. One shipping unit can contain one or more single products. When placing an order, for the quantity please enter single or multiples of a shipping unit.

DISCLAIMER

Subject to change without notice. Errors and omission excepted. Always make sure to use the most recent release.