

PRODUCT DATASHEET

TruSys W 53 W 3000 K SI

TruSys WIDE | Luminaire inserts with wide light distribution



AREAS OF APPLICATION

- Direct replacement for luminaires with compact fluorescent lamps
- Industry halls, high rack warehouse, garages, hardware stores
- Discounters, supermarkets

PRODUCT BENEFITS

- Innovative optical design with a rod lense-technology over the entire length of the luminaire
- Internal holders prevent the luminaire from falling while being mounted
- Easy electrical and mechanical connection to the energy rail via snap-in mounting
- Homogenous light distribution
- Clean look as mouting brackets are not visible when mounted
- Plug-and-play system allows easy installation
- High-value design
- Rows of up to 81 luminaires and a overall length of 124 m possible
- Energy savings of up to 65 % compared to luminaires with 2 x 80 W T5 lamps

PRODUCT FEATURES

- Beam angle: 105°
- Luminous efficacy: up to 135 lm/W
- Fixed energy taps for electrical connection



- High-quality aluminum casing
- Type of protection: IP20
- Follows the unified LEDVANCE design language (SCALE design)

TECHNICAL DATA

Electrical data

Nominal wattage	53.00 W
Operating mode	Integrated LED driver
Nominal voltage	220...240 V
Mains frequency	50/60 Hz
Power factor λ	≥ 0.95

Luminaire control gear data

Max. no. of lum. on circuit break. B16 A	16
Max. no. of lum. on circuit break. C10 A	15
Max. no. of lum. on circuit break. C16 A	27

Photometrical data

Color temperature	3000 K
Color rendering index Ra	≥ 80
Light color (designation)	Warm White
Luminous flux	6600 lm
Luminous efficacy	125 lm/W
Standard deviation of color matching	≤ 3 sdc _m

Light technical data

Beam angle	105.00 °
------------	----------

Dimensions & weight

Length	1534 mm
Width	71.0 mm
Height	53.0 mm
Product weight	1740.00 g

Colors & materials

Housing color	Silver
Product color	Silver
Body material	Aluminum
Cover material	Polymethylmethacrylate (PMMA)

Temperatures & operating conditions

Ambient temperature range	-20...45 °C
----------------------------------	-------------

Lifespan

Lifespan L70 at 25 °C	75000 h
Lifespan L80 at 25 °C	50000 h
Lifespan L90 at 25 °C	35000 h

Additional product data

Mounting type	Suspended/Surface
Mounting location	Mounting rail

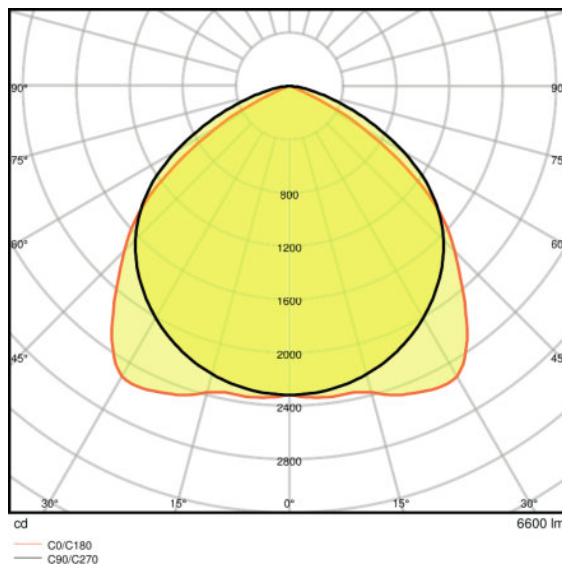
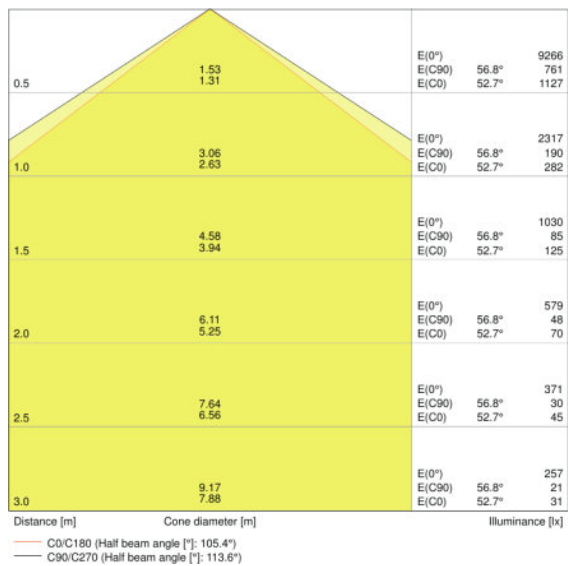
Capabilities

Dimmable	No
Type of connection	Plug-In connection
LED module replaceable	Not replaceable

Certificates & standards

Type of protection	IP20
Protection class	I
Protection class IK (shock resistance)	IK07
Glow Wire Test according to IEC 695-2-1	650 °C
Photobiological safety group	RG 1
Photobio. safety group acc. to EN62471	RG 1
Standards	CE/CB/TÜV SÜD/ENEC/EAC/RoHS

Light Distribution



LDC typ cone

LDC typ polar

EQUIPMENT / ACCESSORIES

- Energy rail with fixed integrated 5-pole cable

LOGISTICAL DATA

Product code	Product description	Packaging unit (Pieces/Unit)	Dimensions (length x width x height)	Volume	Gross weight
4058075100459	TruSys W 53 W 3000 K SI	Shipping carton box 3	1561 mm x 186 mm x 94 mm	27.29 dm ³	6700.00 g

The mentioned product code describes the smallest quantity unit which can be ordered. One shipping unit can contain one or more single products. When placing an order, for the quantity please enter single or multiples of a shipping unit.

DISCLAIMER

Subject to change without notice. Errors and omission excepted. Always make sure to use the most recent release.