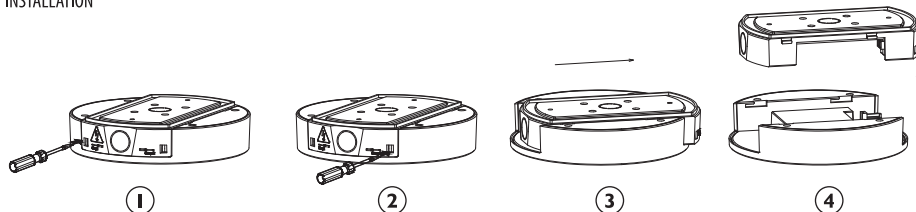


EV-LED-FIRE-SM-BASIC

Remove the product from the box and inspect it for any damage. If you believe the product to be damaged or otherwise unsound, **DO NOT** install the product. Please pack it back into its box and return it to the place of purchase for replacement. If the product is satisfactory, proceed with the installation.

INSTALLATION



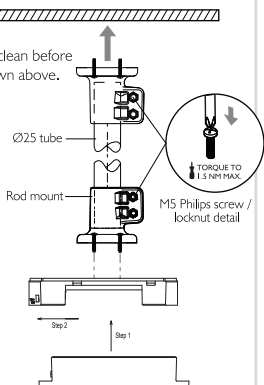
ROD MOUNT (OPTION)

The product and rod **MUST BE** dry and clean before assembly. Disassemble the product as shown above.

Ensure rod is mounted on flat surface and fastened with the appropriate fixing. Use a tube, push it firmly in on both ends and fasten.

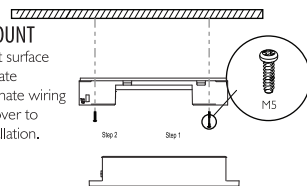
DO NOT over-tighten screws when mounting. The rod mount is suitable with tubes from 0-2 metres in length.

The weight on the rod must not exceed 8kg. Wiring can be run inside rod. Terminate the wiring and replace cover to complete the installation.



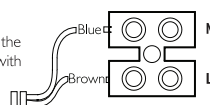
SURFACE MOUNT

Secure to a flat surface using appropriate fasteners, terminate wiring and replace cover to complete installation.



TERMINAL BLOCK

Wiring schematic for the terminal block used with the Surface Mount Ledfire Basic.



SAFETY WARNINGS

1. **THIS PRODUCT MUST ONLY BE INSTALLED BY A LICENSED ELECTRICIAN.**
2. **BEFORE COMMENCING INSTALLATION TURN OFF AND ISOLATE THE ELECTRICAL SUPPLY.**
3. **DO NOT ENERGISE WITH PRODUCT OPEN OR DISASSEMBLED.**
4. **SUPPLY VOLTAGES WITHIN PRODUCT. ISOLATE SUPPLY VOLTAGE BEFORE OPENING OR SERVICING.**
5. **THERE ARE NO USER SERVICEABLE PARTS.**
6. **DO NOT ATTEMPT TO SERVICE OTHER PARTS OF THE FITTING AS THIS VOID THE WARRANTY.**
7. **AS THE INSTALLER, IT IS YOUR RESPONSIBILITY TO ENSURE YOU COMPLY TO ALL RELEVANT BUILDING AND SAFETY CODES FOR EXAMPLE THE BCA, AS3000. REFER TO APPLICATION STANDARDS FOR THE RELEVANT RULES.**
8. **INDICATOR IS FLASHING WHEN CHARGING, IS ILLUMINATED GREEN WHEN FULLY CHARGED, AND TURNS OFF WHEN BATTERY FAILURE.**
9. **WHEN THE AC POWER IS CUT OR WHEN PRESSING THE TEST BUTTON, THE LUMINAIRE WILL OPERATE IN EMERGENCY MODE.**
10. **THE LIGHT SOURCE CONTAINED IN THIS LUMINAIRE SHALL ONLY BE REPLACED BY THE MANUFACTURER OR HIS SERVICE AGENT OR A SIMILAR QUALIFIED PERSON.**
11. **SUPPLY VOLTAGES WITHIN ISOLATE SUPPLY BEFORE OPENING.**
12. **DO NOT INSULATION TEST OVER 500Vdc.**

⚠ WARNING

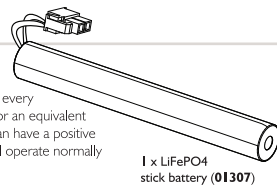
The Ledfire Basic Emergency Luminaire is connected to an unswitched active during normal operating conditions. When disconnected from the mains supply, the Ledfire Basic is powered by a LiFePO4 battery operated inverter. Due to this, care should be taken when replacing the battery.

REPLACING THE BATTERY

Access the battery by removing the product cover. Disconnect and remove battery. Replace battery as was previously installed. Battery can be connected in one direction only, do not force. Allow a minimum 24 hours charging time before carrying out any discharge tests as per the requirements in AS/NZS 2293.

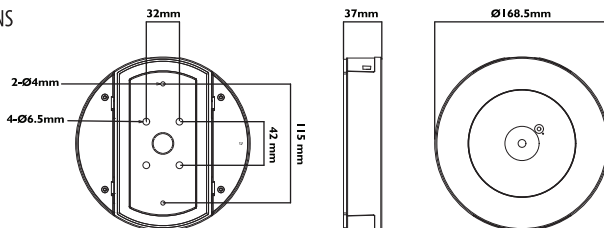
BATTERY LIFE

To maintain the economic life of this product it is required that the battery be discharged and recharged at least once every 6 months. The battery life can be reduced if the battery is not discharged as per the requirements of AS/NZS 2293 or an equivalent standard. Increasing the number of duration tests above that as defined in AS/NZS 2293 or an equivalent standard can have a positive effect on the battery performance as long as 12 discharge cycles per year is not exceeded. The recharging device will operate normally after removal of short circuit fault.



1 x LiFePO4
stick battery (01307)

DIMENSIONS



Voltage	220-240V ac	Class	2	Wiring	Hardwired
Frequency	50 Hz	Duration	120 min	Battery Type	LiFePO4
Max. Ambient Temp.	40°C	IP Rating	IP20	Charging Time	16 hours
Emergency Class.	D32	Mounting Type	Surface / Rod Mounted	Charging Type	Variable
Average Power Consumption	0.35 W	Max. Power Consumption	2W	Battery spec	3.2V 1500mAh

ORDERING INFORMATION

SKU	DESCRIPTION	PRODUCT NUMBER	CARTON QTY.	WEIGHT(NET/ GROSS)
18193	Ledfire Basic Surface Mounted Emergency Luminaire D32	9336462181935	8	- kg / - kg
14510	Ledfire Basic Surface Mounted Emergency Luminaire D32 Black	9336462145104	8	- kg / - kg

ACCESSORIES AND SPARE PARTS

CODE	MODEL	DESCRIPTION
01307	EV-1500mAh-3.2V-LiFePO4	1500mAh 3.2V 1 Cell LiFePO4 Stick Battery
01990	EV-RODMOUNT-WHT	Rod Mount Brackets, Rod Size Ø25mm
02004	EV-RODMOUNT-BLK	Rod Mount Brackets, Rod Size Ø25mm

SPACING TABLE (DISTANCE BETWEEN FITTINGS)

Lx	CLASSIFICATION	MOUNTING HEIGHT (M)															
		2.1	2.4	2.7	3.0	3.3	3.6	4.0	4.5	5.0	6.0	7.0	8.0	9.0	10	15	20
0.2	D32	15.4	16.1	16.7	17.2	17.6	18.0	18.5	19.1	19.5	20.2	20.6	20.7	20.6	20.3	14.6	

WARRANTY STATEMENT

Ekor products are distributed in Australia and New Zealand by Evolt Pty Ltd (Evolt). The Australian Consumer Law as well as other Australian laws guarantee certain conditions, warranties and undertakings, and give you other legal rights, in relation to the quality and fitness for purpose of Ekor products sold in Australia. In Australia, our goods come with guarantees that cannot be excluded under the Australian Consumer Law. You are entitled to a replacement or refund for a major failure and compensation for any other reasonably foreseeable loss or damage. You are also entitled to have the goods repaired or replaced if the goods fail to be of acceptable quality and the failure does not amount to a major failure. What constitutes a major failure is set out in the Australian Consumer Law. Nothing in this Warranty purports to modify or exclude the conditions, warranties and undertakings, and other legal rights, under the Australian Competition and Consumer Act and other Australian laws. Ekor products are warranted in Australia for a period of 24 months from the date of delivery of the product, provided that the products are properly stored, installed, used and maintained in accordance with the instructions contained within their manual. Products that have been altered in any way or used other than in accordance with their instructions are not covered by this warranty.

This warranty is not transferable and is valid only in the hands of the purchaser of the product. The warranty does not cover Ekor products other than those purchased from Evolt. Proof of purchase must be provided to Evolt with any warranty claim. Evolt recommends that the purchaser attaches their proof of purchase to their product manual. Evolt's total liability under this warranty is limited to the cost of repair or replacement of the faulty product. Evolt may satisfy its obligations under this warranty in full by repair or replacement of a faulty product. This warranty does not apply to consumable items such as lamps or batteries or other items that can be classified as consumable. For the avoidance of any doubt, any and all warranties or conditions which are not guaranteed under the Australian Competition and Consumer Act or the Australian Competition and Consumer Regulations 2010 and which are not expressly included in this Warranty as additional warranties or conditions are excluded. This Warranty does not cover loss or damage caused by wear and tear, misuse, incorrect installation or operation, failure to clean and maintain, incorrect voltage or non-authorized electrical connections, adverse external conditions (such as power surges and dips, acts of God, exposure to heat, corrosion, insect or vermin infestation), use of non-authorized or defective parts or globes, or to items that have been repaired other than by Evolt or a repairer approved by Evolt.

TECHNICAL SUPPORT AND TROUBLESHOOTING

For further assistance in using this product, consult your nearest wholesaler or Evolt Pty Limited.