

3F Linda

Installation Details

3F Linda allows for quick and safe installation with various fixing methods.

Ceiling

3F Linda lengths 660mm, 1270 mm and 1570 mm.

Pair of stainless steel brackets, for quick connection, allow for wide tolerance for expansion and/or inaccurate fixing of the wall plug.



Ceiling

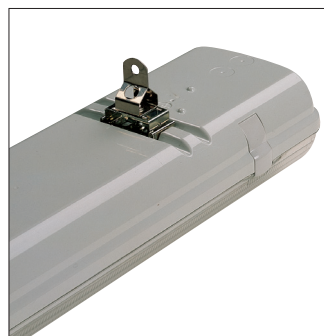
3F Linda length 300 mm

Suspension

Installation with hooks or chains.

3F Linda lengths 660 mm, 1270 mm and 1570 mm.

Pair of stainless steel springs, for quick connection.



Suspension

3F Linda and Pair of hooks for quick fastening, stainless steel.

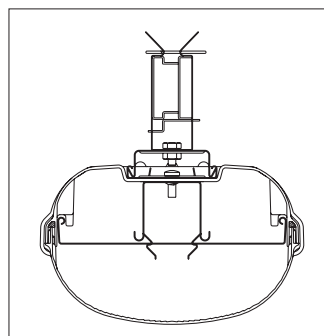
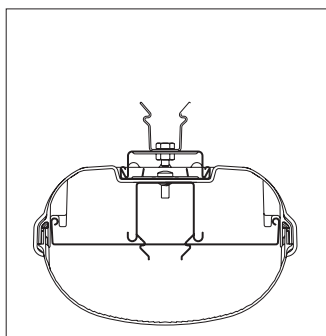
Accessories:

13 GSI for luminaires of 300 mm in length.

13 TRM for luminaires of other lengths.

Busbar

Installation on busbar with the brackets supplied with the busbar.

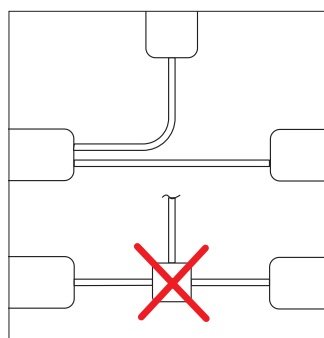


Busbar

Installation on busbar with the brackets supplied with the busbar.

Provision for **cascade connection line for the entire 3F Linda range with the exception of the transparent, OP and Basic models.**

The gear tray hinges **downwards** for easy maintenance.



Possibility of branch installation using the **cascade connection line** thanks to the **multiple holes** on the end cap, avoiding the use of junction boxes.

Safety snap-lock clips for diffuser mounting.

Opening performed by means of a screwdriver.



Closing the diffuser is easy and quick thanks to the centring aids on housing and the side snap-lock clips that just need to be pressed.