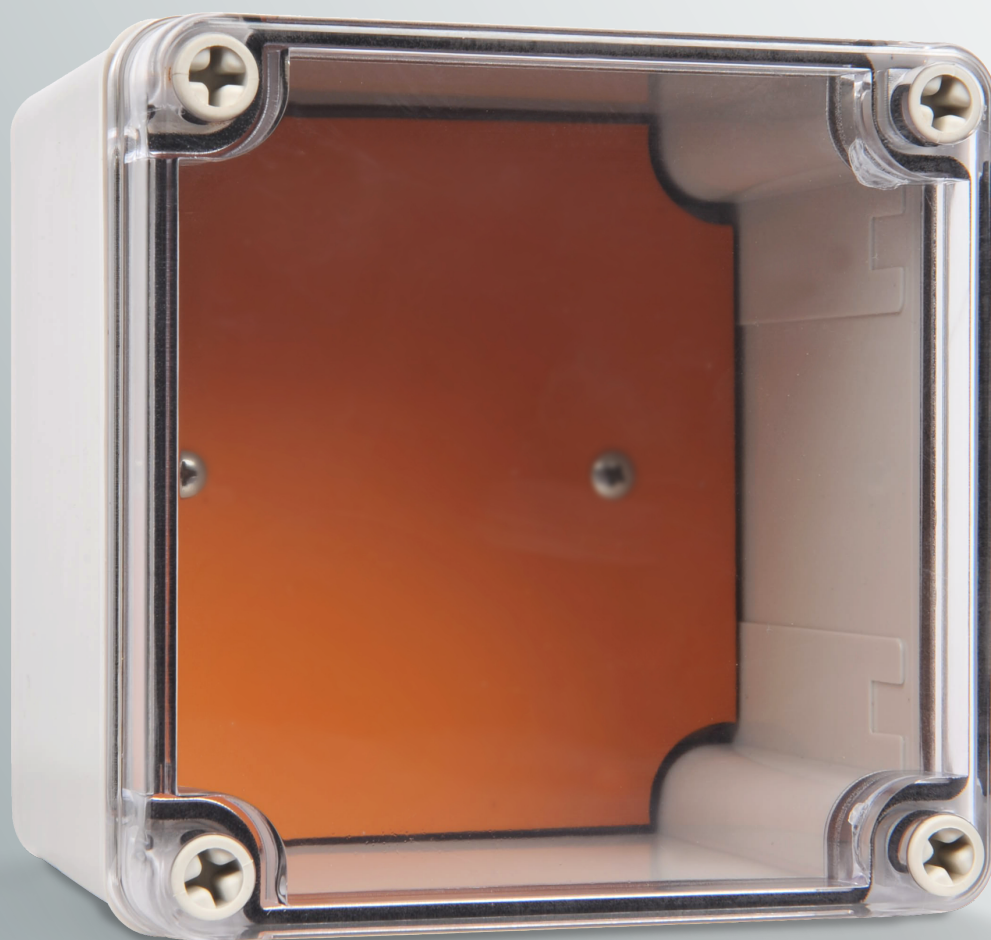


LED FIRE SURFACE MOUNT IP66 CASE

WEATHERPROOF ENCLOSURE FOR LED FIRE SURFACE MOUNT



EV-LED FIRE-SM-CASE
SKU: 03923

FEATURES

- Compatible with Ledfire surface mount
- High rated weatherproofing
- Easy installation
- Poly carbonated (PC) body
- Acrylonitrile butadiene styrene (ABS) cover



IP66
IP66 ingress protection



LOW TEMPERATURE
Suitable for cool rooms



ROD MOUNT
Suspend with optional rod mount accessory



SURFACE MOUNT
Can easily be mounted on the ceiling

ORDERING INFORMATION

CODE	PRODUCT CODE	DESCRIPTION	PRODUCT NUMBER	CARTON QTY
03923	EV-LED FIRE-SM-CASE	Ledfire Surface Mount Weatherproof Case IP66	9336462039236	-

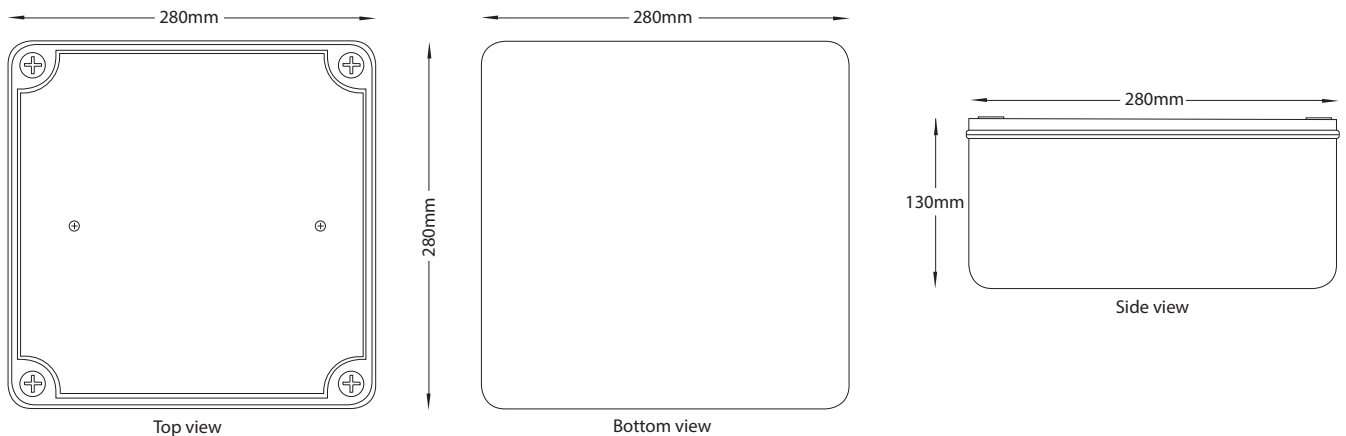
OPERATIONAL INFORMATION

GENERAL					
IP rating	IP66	Ambient temp.	-40°C to +80°C	Mounting type	Surface / rod mount

CONSTRUCTION AND DIMENSIONS

BODY (FINISH)	Poly carbonated (PC)
DIFFUSER	Acrylonitrile butadiene styrene (ABS)
CUT OUT*	N/A

NOTE: For more information on the chemical resistance of our polycarbonate, please see the technical downloads page at ektor.com.au



ACCESSORIES LIST

CODE	ORDER CODE	DESCRIPTION
I 1283	EV-LED FIRE-SM-LITE	Ledfire Lite Surface Mounted Emergency Luminaire - D50
01689	EV-LED FIRE-SM	Ledfire Surface Mounted Emergency Luminaire - D63
01690	EV-LED FIRE-SM-B	Ledfire Surface Mounted Emergency Luminaire Black - D63
01990	EV-RODMOUNT-WHT	Rod mount kit white

Datasheet is subject to change without notice

Last updated: **23. May 2018_V1.0**



Please view
our website for
full datasheet