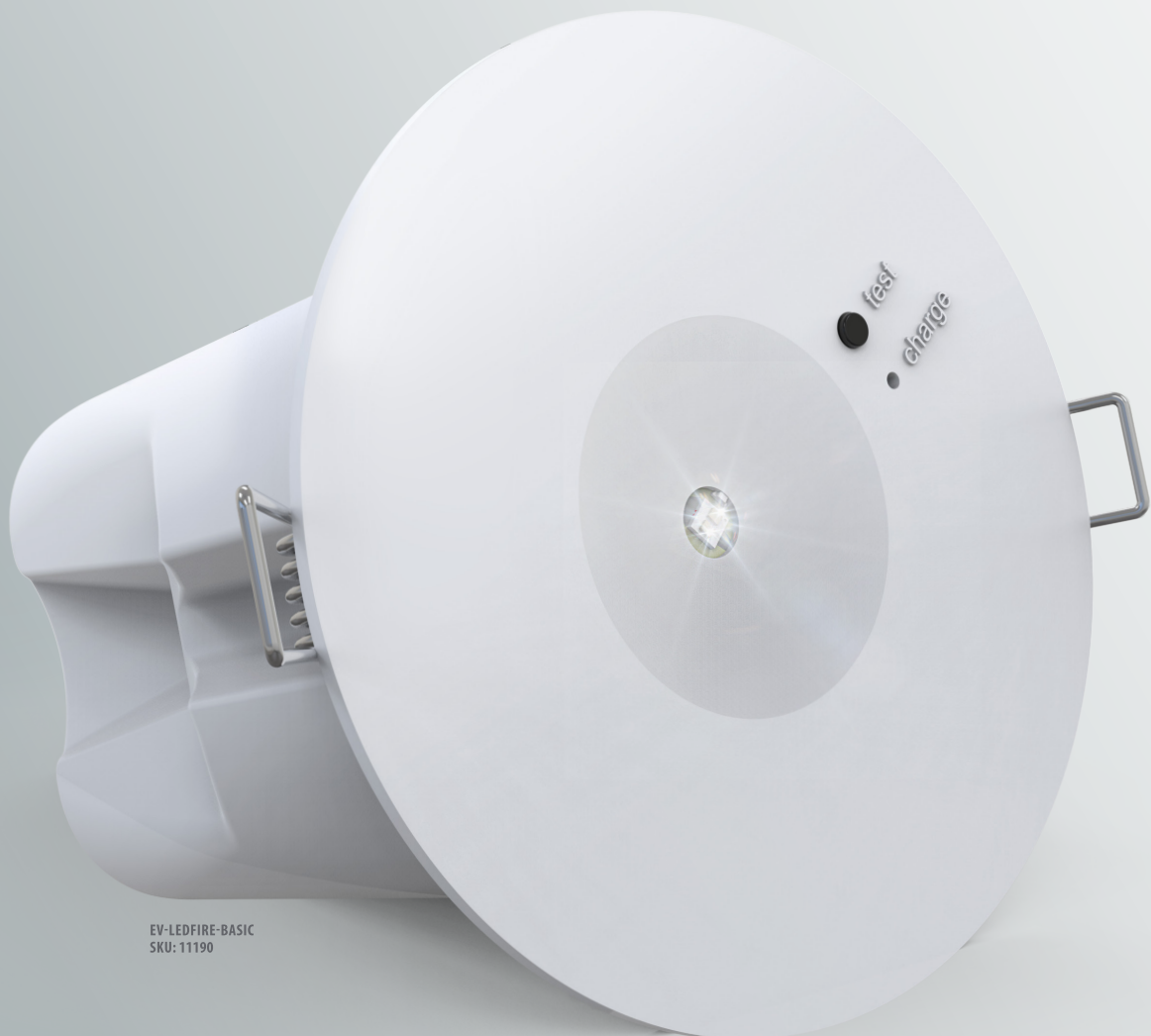




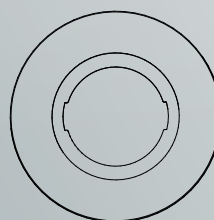
LED FIRE BASIC



EV-LED FIRE-BASIC
SKU: 11190

FEATURES

- Lithium battery (LiFePO₄)
- Fully compliant (AS2293)
- Emergency classification D32 (2hr)
- Low power consumption
- Recessed mount



INCLUDING OUTER RING

The Ledfire Basic come complete with an outer ring to suit hole sizes up to 130mm

ORDERING INFORMATION

SKU	PRODUCT CODE	DESCRIPTION	PRODUCT NUMBER	CARTON QTY.
11190	EV-LED FIRE-BASIC	Ledfire Basic Emergency Luminaire - D32	9336462111901	4

OPERATIONAL INFORMATION

GENERAL				BATTERY	
Voltage (V)	~220-240V	Emergency Classification	D32	Battery Type	LiFePO4
Frequency (Hz)	50Hz	Mounting Type	Recessed mounting	Battery Voltage	3.2V 1500mAh
Max. Ambient Temp.	40°C	Wiring	Flex & Plug	Battery Code(s)	01307
Class	2	Lamp Power	1.4W (D32)	Charging Time	16 Hours
Duration	90 / 120 min	Avg. Circuit Power	0.35W	Charger Type	Variable
IP Rating	IP20	Max. Circuit Power	2.5W		

CONSTRUCTION AND DIMENSIONS

BODY	PC
DISH	PC
CUT OUT*	70 mm - 80 mm
CUT OUT**	75 mm - 130 mm
<p>* Size without outer ring</p> <p>** Size with outer ring</p>	
<p>NOTE: For more information on the chemical resistance of our polycarbonate, please see the technical downloads page at ektor.com.au</p>	

ACCESSORIES AND SPARE PARTS

SKU	ORDER CODE	DESCRIPTION
01307	EV-1500mAh-3.2V-LiFePO4-Loom	Battery stick 1500mAh 2 Cell LiFePO4

SPACING TABLE (DISTANCE BETWEEN FITTINGS)

LUX	CLASSIFICATION	MOUNTING HEIGHT (M)															
		2.1	2.4	2.7	3	3.3	3.6	4	4.5	5	6	7	8	9	10	15	20
0.2	D32	15.4	16.1	16.7	17.2	17.6	18.0	18.5	19.1	19.5	20.2	20.6	20.7	20.6	20.3	14.6	

Datasheet is subject to change without notice

Last updated: 8. May 2019



Please view
our website for
full **datasheet**