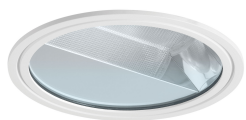


PRODUCT DETAILS



Dimensions



Accessories



PRETTUS M ASYM

**PRETTUS M ASYM POLISHED +
TRANSPARENT LED 1500lm/830 1x19W, FIX, RAL 9003**

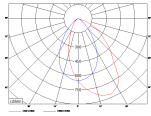
DOWNLOADS

[Datasheet](#)
[Product sheet](#)
[Installation manual](#)
[IES file](#)
[LDT file](#)
[EEC](#)

Description

MOUNTING	Ceiling recessed
LIGHT SOURCE	LED
OPTICAL SYSTEM	Aymmetric polished reflector + transparent cover (APT)
LIGHT DISTRIBUTION	Asymmetric
WIRING	Electronic control gear FIX (ECG)
MATERIALS	Diffuser: microprismatic PMMA Housing: sheet steel Reflector: polished anodised aluminium Trim: die cast aluminium
SURFACE FINISH	Trim: white RAL 9003 (W03)
VOLTAGE	220-240 V, 50-60 Hz
POWER FACTOR	> 0,95
NET LUMEN OUTPUT (Ta=25°C)	1500 lm
LUMINOUS FLUX TOLERANCE	+/- 10 %
POWER CONSUMPTION	19 W
SYSTEM EFFICACY	79 lm/W
CORRELATED COLOUR TEMPERATURE	3000 K
COLOUR RENDERING INDEX	80 Ra
COLOUR TOLERANCE	3 SDCM
EEC	A++ / A+ / A
PROTECTION CLASS	II
THERMAL MANAGEMENT	Passive
SERVICE LIFETIME (Ta=25°C)	50,000 hours / L80 / B10
AMBIENT OPERATING TEMPERATURE	From -20 °C to +35 °C
IP PROTECTION DEGREE	IP20, optical part IP54
WARNING	The luminaire is not suitable for use in outdoor applications
DIMENSIONS	Diameter - 216 mm, height - 119 mm
OPENING	Diameter - 204 mm
WEIGHT	1 kg

LIDC



AREAS OF APPLICATION

 ARCHITECTURE AND MEDIA

 RETAIL AND PRESENTATION



5 YEARS
WARRANTY



EEC
A++/A+/B



HEAT
SINK



MAINTENANCE
FREE



UV/IR



ECO
FRIENDLY



ENERGY
SAVING

The manufacturer reserves all rights to make changes in materials and components used in production of lighting fittings.