



ophelia



ophelia

**THE
NEXT GENERATION
OF ULTRA-EFFICIENT
SURFACE LUMINAIRES**



YOUR FREEDOM TO CREATE

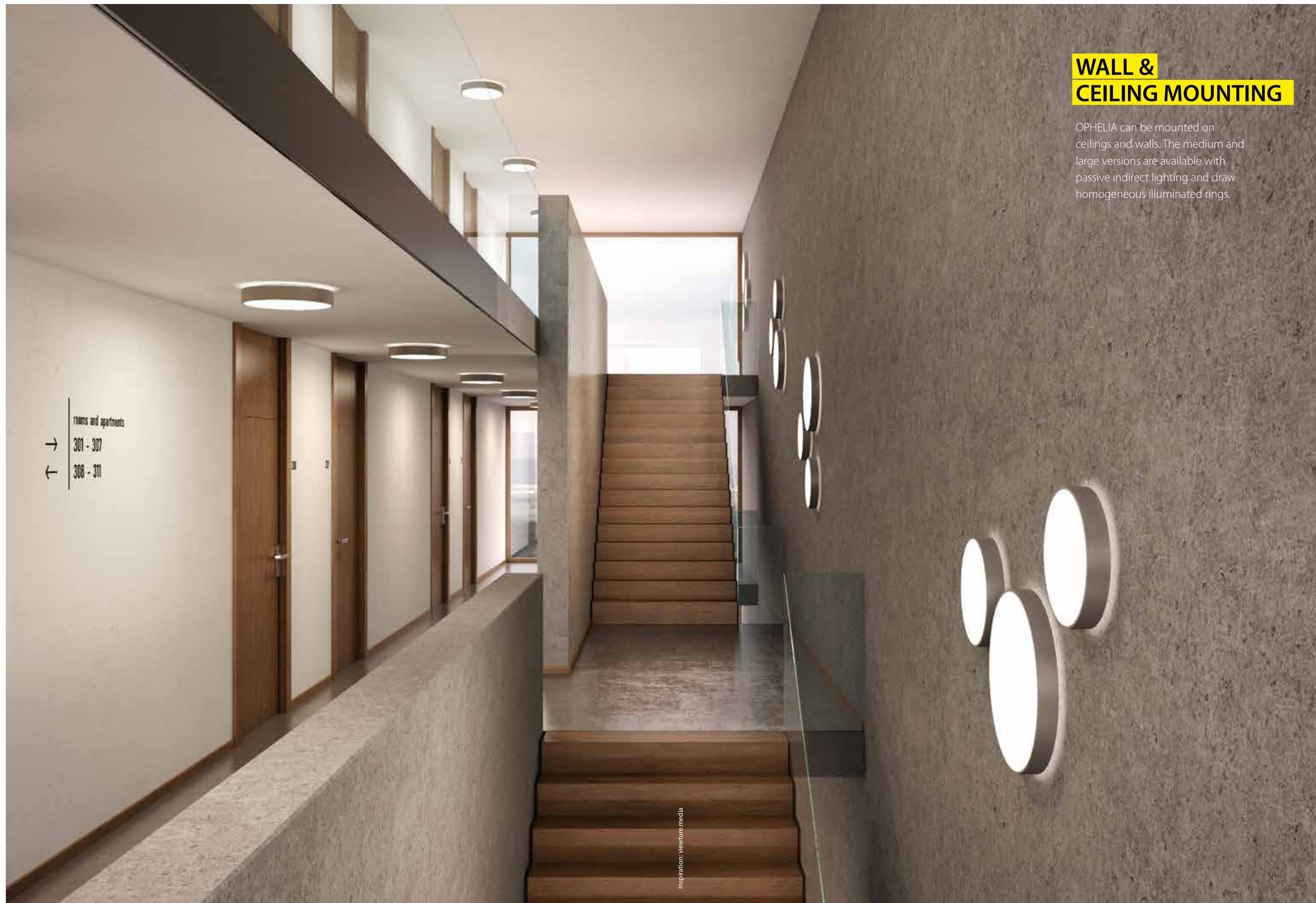
OPHELIA combines the ability to customize its design with state-of-the-art performance and efficiency. Choose from different mounting types, sizes, colors and functionalities to create your own unique surface luminaire for your special project!



INDIVIDUAL SUSPENSION TYPES

OPHELIA is available as a suspended, surface or wall-mounted luminaire. Choose between a range of 3 different wire suspensions or a pendulum rod.

Inspiration: viewturemedia



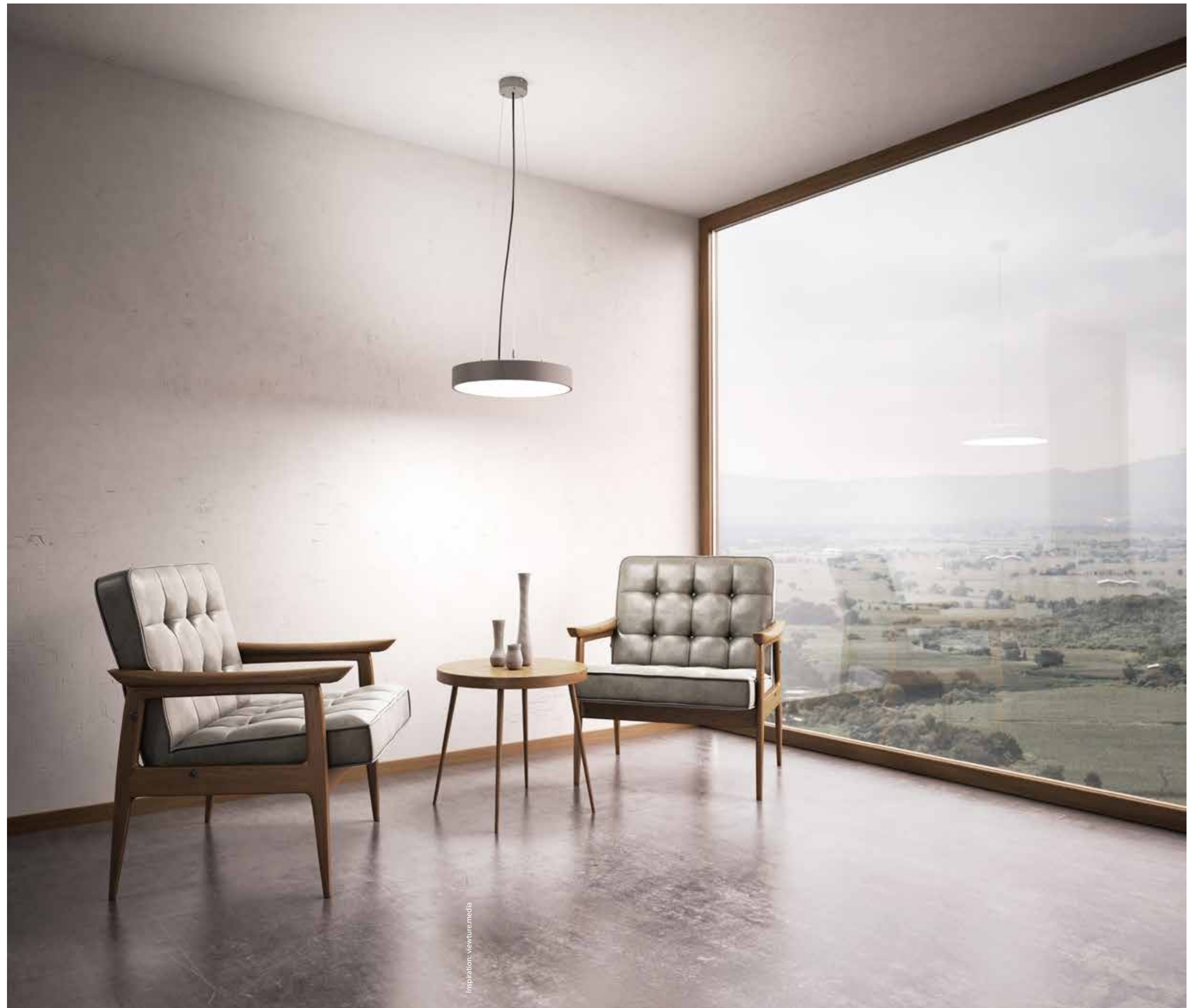
WALL & CEILING MOUNTING

OPHELIA can be mounted on ceilings and walls. The medium and large versions are available with passive indirect lighting and draw homogeneous illuminated rings.

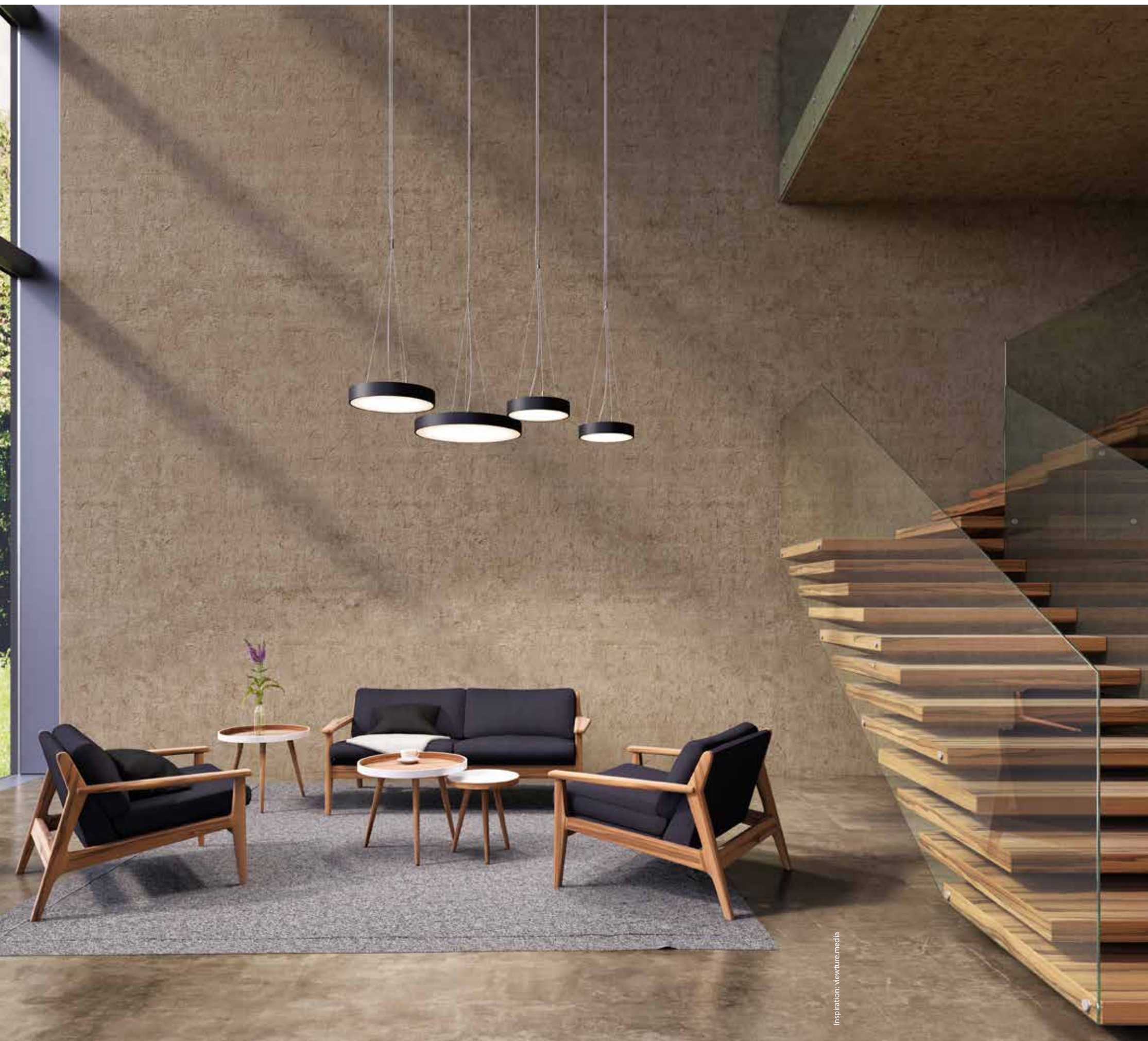
DIRECT & INDIRECT LIGHTING



The suspended version of OPHELIA is available with direct/indirect light. An additional, ring-shaped LED board with diffuser illuminates the ceiling and brightens up the room smoothly. Direct and indirect lighting can be controlled separately on request.



Inspiration: viewturemedia



Inspiration: viewturemedia

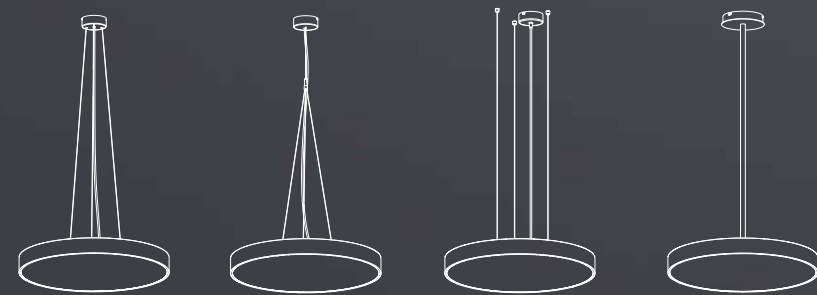
DYNAMIC WHITE



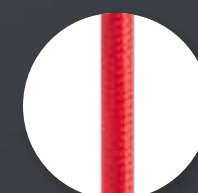
Optional Dynamic White in DT8 allows you to manually or automatically adjust color temperature between 2,700 and 6,500 Kelvin. OPHELIA creates the perfect atmosphere throughout day and night!

SUSPENSION

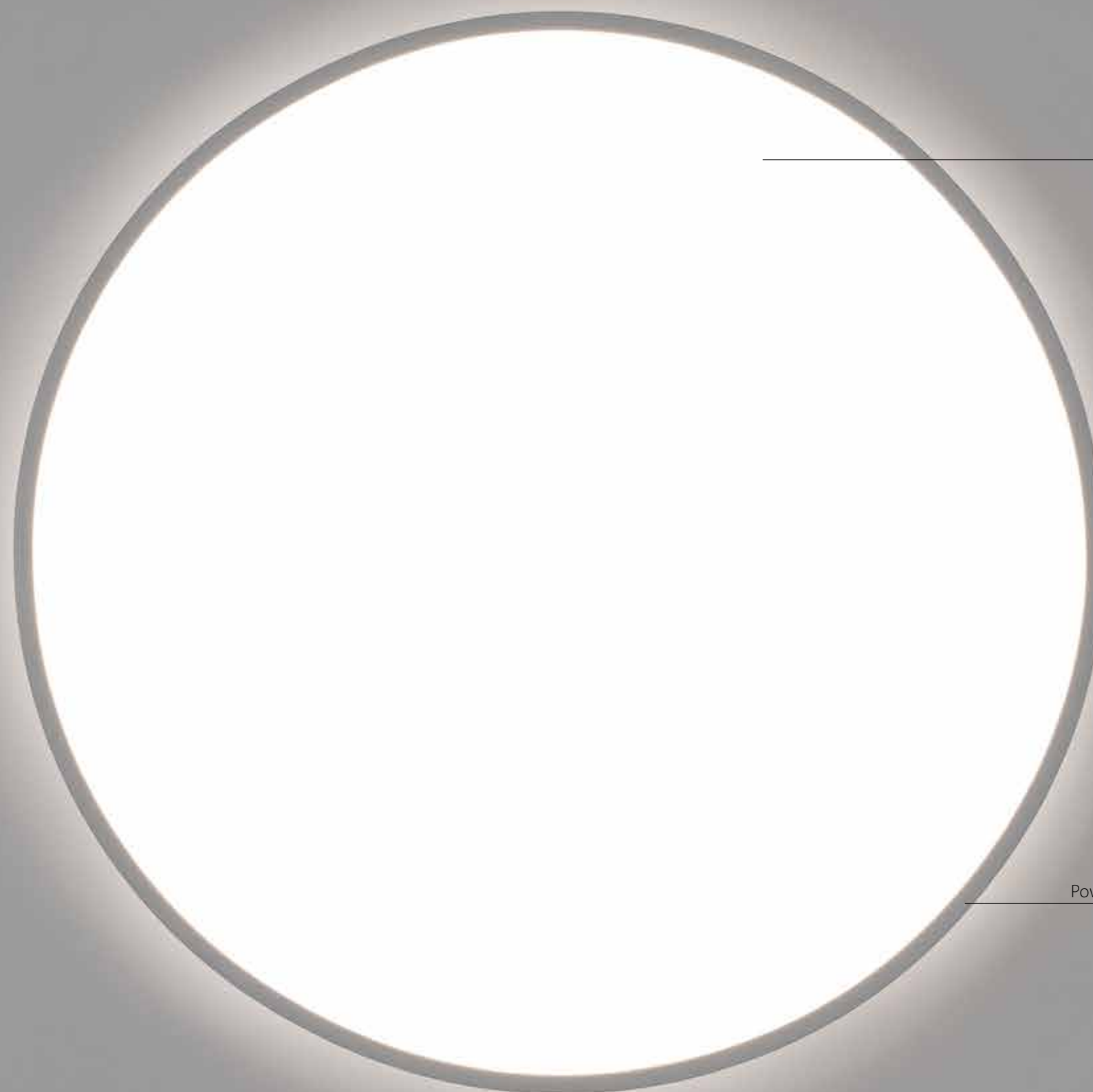
Customize your suspended OPHELIA by choosing from a range of suspension rod and cables, all available in different colors.



The suspension rod can be manually shortened by cutting. It is available in any RAL color on request.



Optional textile-covered suspension cables are available in White, Black, Red, Iron, Gold and Silver.

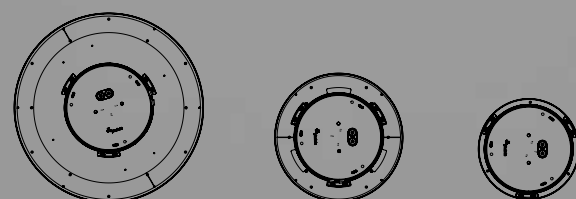


Diffuser satiné or microprism

Homogenous light distribution

Powder-coated single-frame housing

SIZES



Choose between 3 different sizes of 330, 420 and 620 mm diameter.

HIGHLIGHTS



High energy efficiency
up to 164 lumen / watt



Motion & daylight sensor
perfect light whenever needed



Emergency lighting
3 hours battery-powered lighting



Insect-proof & dust-proof
IP50 rated for low maintenance

CLICK & PLAY



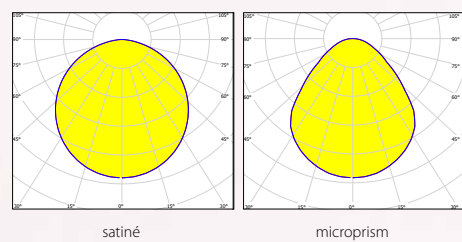
Mounting and dismounting of surface luminaires has never been so easy!

OPHELIA's sophisticated CLICK & PLAY connector incorporates a three/five-pin connector. It allows you to plug in the luminaire by just pressing the housing onto the mounted canopy with three clicks.

Unlock the housing from the canopy by rotating it to the right. If mounted on walls, a specially developed accessory must be used as a dismount-lock!

ophelia direct

Aufbauleuchte | Surface-mount luminaire | Luminaire en saillie | Apparecchio a plafone
Wandleuchte | Wall luminaire | Applique murale | Apparecchio a parete



LED

3000 K, 4000 K, dynamic white 2700-6500K
up to 160lm/W
 $R_a > 80$, $R_a > 90$, MacAdam 3
non-dim/DALI
IEC 62471: Blue light hazard: RG 0
Lifetime up to L80/50.000 h

Optic

direct
satiné
micropism for reduced brightness (LRA)

Options

Emergency lighting 3 h
RAL of your choice (p. 28)
*Wall mounted with accessory

Housing

powder coated

RAL 9006	
RAL 9016	
RAL 9005	



ophelia direct

F53 1 2 - 3 F1 4 5 6

1 Montageart | Mounting

Aufbauleuchte | Surface-mount | Luminaire en saillie | Apparecchio a plafone **A**
Wandleuchte | Wall luminaire | Applique murale | Apparecchio a parete **W**

2 Dimension

ø 330 mm	033
ø 420 mm	042
ø 620 mm	062

3 Gehäusefarbe | Housing colour | Couleur du luminaire | Colore profilo

silber silver argent argento (RAL 9006)	9006
weiß white blanc bianco (RAL 9016)	9016
schwarz black noir nero (RAL 9005)	9005

RAL colours on request (p. 28)

4 Farbtemperatur | Colour temperature | Température de couleur |

Temperatura colore	
3000 K, Ra > 80	830
3000 K, Ra > 90	930
4000 K, Ra > 80	840
4000 K, Ra > 90	940
2700 - 6500 K dynamic white, Ra > 90	HCL

5 Output

low output non-dim	L1
low output DALI	L3
high output DALI	H3
very high output DALI	V3
dynamic white	X3

6 Diffusoren | Diffusers | Diffuseurs | Diffusori

satiné	S
microprism	M

Beispiel | Example | Exemple | Esemplio

ø420 mm, white, IP50, Ra>90, 4000K, very high output DALI, satiné
F53A042-9016F1940V3S

Luminous Flux (lm) Ra>80

4000 K satiné	very high output	high output	low output
ø 330 mm	2657lm	2167lm	952lm
ø 420 mm	4033lm	3289lm	1651 lm
ø 620 mm	8008lm	6415lm	3513lm

System Power (W)

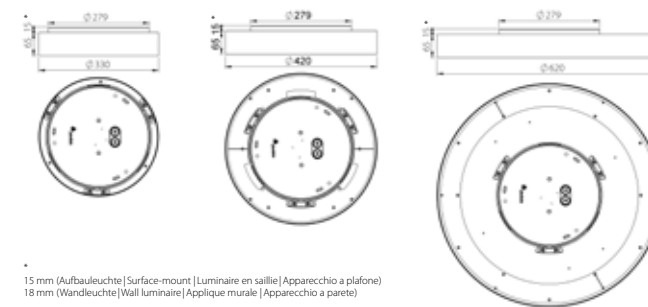
	very high output	high output	low output	dynamic white
ø 330mm	18,5W	15W	7,2W	15W
ø 420mm	28W	22W	11,5W	22W
ø 620mm	51W	40W	22W	40W

COMPARE **LIGHT COLOUR** Ra > 80

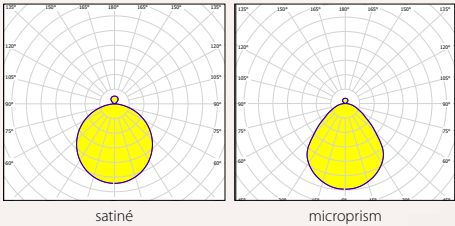
Luminous Flux (lm)			3000 K			4000 K			dynamic white		
satiné	very high output	high output	low output	very high output	high output	low output	2700-6500 K				
ø 420mm	3818lm	3114lm	1563lm	4033 lm	3289lm	1651 lm	2608 lm				

COMPARE **COVER** $R_a > 80$

Luminous Flux (lm)		satiné			microprism			ø 330 mm	2,0 kg
4000 K	very high output	high output	low output		very high output	hight output	low output	ø 420 mm	2,6 kg
ø 420 mm	4033 lm	3289 lm	1651 lm		3696 lm	3014 lm	1513 lm	ø 620 mm	4,5 kg



Aufbauleuchte | Surface-mount luminaire | Luminaire en saillie | Apparecchio a plafone
Wandleuchte | Wall luminaire | Applique murale | Apparecchio a parete



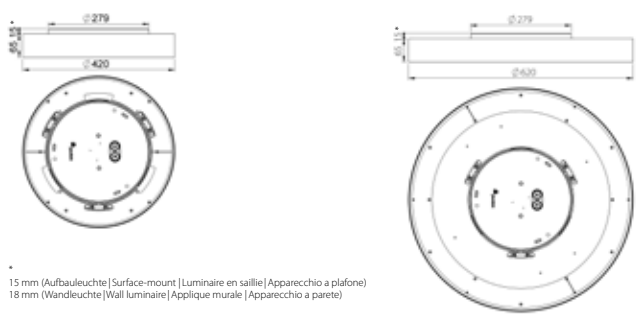
LED	Optic	Options	Housing
3000 K, 4000 K, dynamic white 2700-6500 K	direct	Emergency lighting 3 h	powder coated
up to 170 lm/W	satiné	RAL of your choice (p. 28)	RAL 9006
R _a > 80, R _p > 90, MacAdam 3	microprism for reduced brightness (LRA)	*Wall mounted with accessory	RAL 9016
non-dim / DALI			RAL 9005
IEC 62471: Blue light hazard: RG 0			
Lifetime up to L80 / 50.000 h			

1 Montageart Mounting		5 Output	
Aufbauleuchte Surface-mount Luminaire en saillie Apparecchio a plafone	A	low output non-dim	L1
Wandleuchte Wall luminaire Applique murale Apparecchio a parete	W	low output DALI	L3

3 Gehäusefarbe Housing colour Couleur du luminaire Colore profilo		6 Diffusoren Diffusers Diffuseurs Diffusori	
silver silver argent argento (RAL 9006)	9006	satiné	S
weiß white blanc bianco (RAL 9016)	9016		
schwarz black noir nero (RAL 9005)	9005	microprism	M

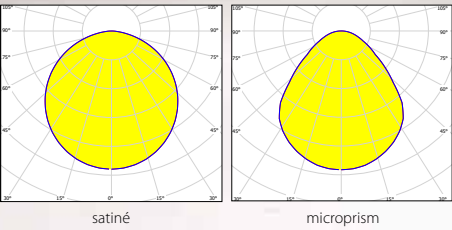
Luminous Flux (lm) Ra>80				System Power (W)				
4000K satiné	very high output	high output	low output		very high output	high output	low output	dynamic white
ø 420 mm	4367 lm	3562 lm	1788 lm	ø 420 mm	28W	22W	11,5W	22W
ø 620 mm	8469 lm	6784 lm	3715 lm	ø 620 mm	51 W	40W	22W	40W

COMPARE COVER Ra > 80							Weight (kg)	
Luminous Flux (lm)								
satiné				microprism				
4000 K	very high output	high output	low output	very high output	high output	low output	ø 420 mm	2,7 kg
ø 420 mm	4367 lm	3562 lm	1788 lm	4003 lm	3265 lm	1639 lm	ø 620 mm	4,9 kg



ophelia direct

Hängeleuchte | Pendant luminaire | Suspensions | Sospensione



LED

3000 K, 4000 K, dynamic white 2700-6500K
up to 160 lm/W
R_a > 80, R_a > 90, MacAdam 3
non-dim / DALI
IEC 62471: Blue light hazard: RG 0
Lifetime up to L80 / 50.000 h

Optic

direct
satiné
microprism for reduced brightness (LRA)

Options

Emergency lighting 3 h
RAL of your choice (p. 28)
7 cable colours
Central & Rod suspension

Housing

powder coated
RAL 9006
RAL 9016
RAL 9005

!

INDOOR
USE ONLY!

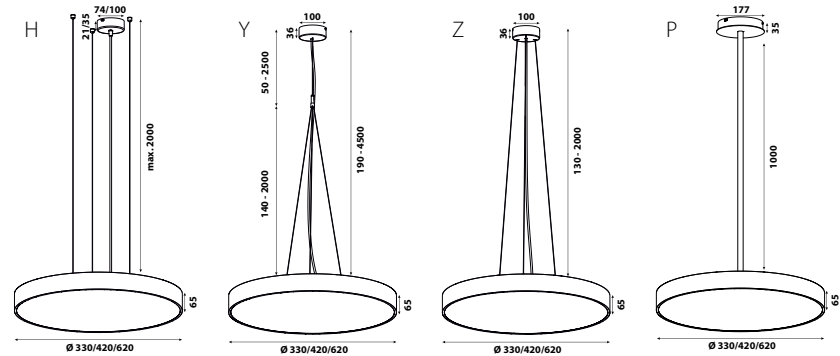
1 Suspension	4 Farbtemperatur Colour temperature Température de couleur Temperatura colore
lotrecht vertical verticalement verticalmente	H
zentral gebündelt central packed centrale groupée centrale stretto	Y
zentral zusammenführend central merging centrale sur patère centrale convergenti	Z
starres Pendrohr rod suspension rigide sospensione tige rigido 1000 mm	P
2 Dimension	
ø 330 mm	033
ø 420 mm	042
ø 620 mm	062
3 Gehäusefarbe Housing colour Couleur du luminaire Colore profilo	
silber silver argent argento (RAL 9006)	9006
weiß white blanc bianco (RAL 9016)	9016
schwarz black noir nero (RAL 9005)	9005
RAL colours on request (p. 28)	
5 Output	
low output non-dim	L1
low output DALI	L3
high output DALI	H3
very high output DALI	V3
dynamic white	X3
6 Diffusoren Diffusers Diffuseurs Diffusori	
satiné	S
microprism	M

Beispiel | Example | Exemple | Esempio
ø 420 mm, white, 4000 K, high output DALI, satiné
F53H042-9016F1840H3S

Luminous Flux (lm) Ra>80				System Power (W)				
4000 K satiné	very high output	high output	low output		very high output	high output	low output	dynamic white
ø 330mm	2657lm	2167 lm	952lm	ø 330mm	18,5W	15W	7,2W	15W
ø 420mm	4033lm	3289 lm	1651 lm	ø 420mm	28W	22W	11,5W	22W
ø 620mm	8008lm	6415lm	3513lm	ø 620mm	51W	40W	22W	40W

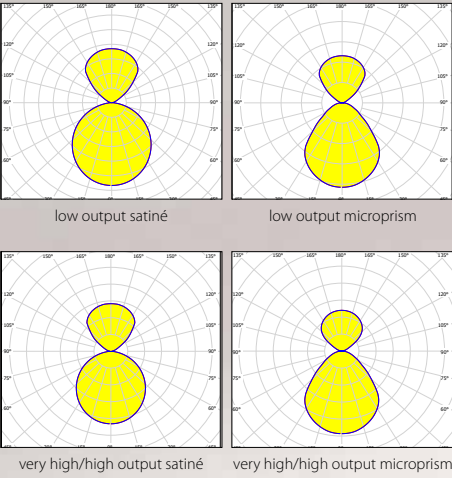
COMPARE LIGHT COLOUR Ra > 80							Ra > 90		
Luminous Flux (lm)			3000 K		4000 K			dynamic white	
satiné	very high output	high output	low output		very high output	high output	low output	2700-6500 K	
ø420mm	3818lm	3114lm	1563lm		4033 lm	3289lm	1651 lm	2608lm	

COMPARE COVER Ra > 80							Weight (kg)		
Luminous Flux (lm)			satiné		microprism			H/Y/Z	P
4000 K	very high output	high output	low output		very high output	high output	low output	ø 330mm	2,4 kg 3,3 kg
ø420mm	4033lm	3289lm	1651 lm		3696lm	3014lm	1513lm	ø 420mm	3,0kg 3,9kg
								ø 620mm	4,9kg 5,8kg



ophelia direct/indirect

Hängeleuchte | Pendant luminaire | Suspensions | Sospensione



LED	Optic	Options	Housing
3000 K, 4000 K, dynamic white 2700-6500K	direct	Emergency lighting 3 h	powder coated
up to 160 lm/W	satiné	RAL of your choice (p. 28)	RAL 9006
R _a > 80, R _a > 90, MacAdam 3	microprism for reduced brightness (LRA)	7 cable colours	RAL 9016
non-dim/DALI		Central & Rod suspension	RAL 9005
IEC 62471: Blue light hazard: RG 0			
Lifetime up to L80/50.000 h			

ophelia direct / indirectF5312-3F2456

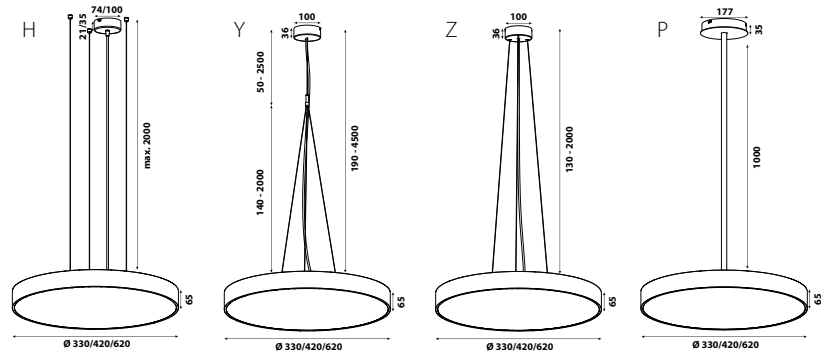
1 Suspension	4 Farbtemperatur Colour temperature Température de couleur Temperatura colore
lotrecht vertical verticalement verticalmente	H
zentral gebündelt central packed centrale groupée centrale stretto	Y
zenral zusammenführend central merging centrale sur patère centrale convergenti	Z
starres Pendenrohr rod suspension rigide sospensione tige rigido 1000 mm	P
2 Dimension	
ø 330 mm	033
ø 420 mm	042
ø 620 mm	062
3 Gehäusefarbe Housing colour Couleur du luminaire Colore profilo	
silber silver argent argento (RAL 9006)	9006
weiß white blanc bianco (RAL 9016)	9016
schwarz black noir nero (RAL 9005)	9005
RAL colours on request (p. 28)	
5 Output	
low output non-dim	L1
low output DALI	L3
high output DALI	H3
very high output DALI	V3
dynamic white	X3
6 Diffusoren Diffusers Diffuseurs Diffusori	
satiné	S
microprism	M

Beispiel | Example | Exemple | Esempio
ø 420 mm, white, 4000 K, high output DALI, satiné
F53H042-9016F2840H3S

Luminous Flux (lm) Ra>80				System Power (W)			
4000 K satiné	very high output	high output	low output		very high output	high output	low output
ø 330 mm	3644 lm	2954 lm	1305 lm	ø 330 mm	28 W	23 W	10,6 W
ø 420 mm	6166 lm	4998 lm	2524 lm	ø 420 mm	41 W	34 W	16,5 W
ø 620 mm	11890 lm	9465 lm	5216 lm	ø 620 mm	77 W	59 W	33 W

COMPARE LIGHT COLOUR Ra > 80							Ra > 90
Luminous Flux (lm)		3000 K		4000 K		dynamic white	
satiné	very high output	high output	low output	very high output	high output	low output	2700 - 6500 K
ø 420 mm	5837 lm	4731 lm	2390 lm	6166 lm	4998 lm	2524 lm	3963 lm

COMPARE COVER Ra > 80							Weight (kg)
Luminous Flux (lm)		satiné		microprism		H/Y/Z P	
4000 K	very high output	high output	low output	very high output	high output	low output	ø 330 mm 2,5 kg 3,5 kg
ø 420 mm	6166 lm	4998 lm	2524 lm	5909 lm	4789 lm	2419 lm	ø 420 mm 3,3 kg 4,2 kg
							ø 620 mm 5,7 kg 6,6 kg



MORE THAN 30 YEARS OF EXPERIENCE







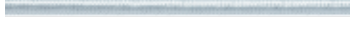
It is time. Time for great ideas. At PLANLICHT, our customers benefit from close collaboration and accompanied services with an outlook for environmentally sustainable products. Our holistic collaboration enables customers to realize projects, just like they want it.

Each project is unique and offers enough flexibility for customized solutions with Made in Austria quality. The accompanied services enable our customers to create their own moods and atmosphere in their workspace. PLANLICHT guarantees customer satisfaction, since this is our top priority.

COLOR
YOUR LIGHT!



Optionale Ausführung | Optional version | Version optionnelle | Versione opzionale

Einspeiskabel Suspension cable Câble d'alimentation Cavo di alimentazione	▷ white	F53-EIN-WHITE	
	▷ black	F53-EIN-BLACK	
	▷ red	F53-EIN-RED	
	▷ iron	F53-EIN-IRON	
	▷ gold	F53-EIN-GOLD	
	▷ silver	F53-EIN-SILVER	
2500mm 5 x 0,75 mm²			
Transparent cable incl. (standard version)			

Wichtige Hinweise

Dieser Katalog richtet sich ausschliesslich an gewerbliche Kunden. Die in diesem Katalog angegebenen Werte sind Bemessungswerte und unterliegen produktionsbedingten Toleranzen*. Alle angeführten Angaben – insbesondere Grössen-, Material-, Farb- und technische Angaben – entsprechen dem Stand bei und dienen ausschliesslich zur Information. Der Herausgeber haftet nicht für Satz- und Druckfehler sowie für Abweichungen der Produkte von Abbildungen und Angaben. planlicht behält sich vor, jederzeit ohne Ankündigung Änderungen an Produkten vor zu nehmen. Es gelten die Allgemeinen Geschäftsbedingungen der planlicht GmbH & Co KG, die unter www.planlicht.com eingesehen werden können.

* Leistung, Lichtstrom und Farbtemperatur unterliegen durch den Einsatz von elektronischen Bauteilen produktionsbedingten Toleranzen.
Toleranzen Leistung und Lichtstrom: +/- 10%. Toleranz Farbtemperatur: +/- 150K. Lichtstrom dynamisch weiss bei 2700K. Lichttechnische Vermessungsdaten beziehen sich auf Leuchten mit weißem Gehäuse (RAL 9016).

Important remarks

This catalogue is reserved for professionals only. The values published in this catalogue are rated values, which can slightly change for reasons related to the production process*. The published data such as dimensions, materials, colours and technical data are valid at time of printing, and exclusively provided for informational purposes. The editor take no responsibility for typographical and print errors, as well as for any differences in the products, pictures and data. planlicht reserves the right to change the products at any time and without any notice. The Terms and Conditions of planlicht GmbH & Co KG (available on www.planlicht.com) shall apply.

* The power output, luminous flux and colour temperature can be slightly different due to specific electronic components used in the manufacturing process. The power output and luminous flux can differ by +/- 10%. The colour temperature can differ by +/-150K. Luminous flux dynamic white at 2700K. Photometric measurements are subject to luminaires with white housing (RAL9016).

Remarques importantes

Ce catalogue est exclusivement réservé aux professionnels. Les valeurs publiées dans ce catalogue sont des valeurs calculées, pouvant légèrement changer pour des raisons liées au processus de fabrication*. Les données techniques et autres informations (dimensions, matériaux, couleurs...) sont celles applicables au moment de l'impression du catalogue, et uniquement fournies à titre informatif. L'éditeur décline toute responsabilité en cas d'erreur de frappe, d'impression et pour tout autre différence concernant les produits, images et données publiées. planlicht se réserve le droit de modifier les produits à sa discrétion, à tout moment et sans préavis. Les conditions générales de vente de planlicht GmbH & Co KG applicables sont consultables sur www.planlicht.com.

* La puissance, le flux lumineux et la température de couleur peuvent légèrement différer en raison de l'utilisation de composants électroniques spécifiques dans le processus de production. La puissance et le flux lumineux peuvent différer de +/- 10 %. La température de couleur peut différer de +/- 150 K. Flux lumineux blanc dynamique à 2700K. Mesures photométriques réalisées avec le luminaire en blanc (RAL9016).

Informazioni importanti

Questo catalogo é riservato ai professionisti. I valori pubblicati in questo catalogo sono valori indicativi, che possono cambiare per ragioni relative al processo produttivo. I dati pubblicati come dimensioni, materiali, colori e dati tecnici sono validi al momento della stampa ed esclusivamente forniti come scopo informativo. L'editore non si assume alcuna responsabilità per errori di tipografia e stampa, così come differencenei prodotti, foto e dati. planlicht si riserva il diritto di cambiare il prodotto in ogni momento e senza preavviso. I termini e condizioni di planlicht GmbH & CO KG sono disponibili su www.planlicht.com.

* La Potenza, il flusso Luminoso e la temperature colore possono essere leggermente diversi a causa delle componenti elettroniche usate nel processo di produzione. La potenza e il flusso possono variare del +/- 10%. La temperatura colore di +/- 150K. Flusso luminoso bianco dinamico a 2700K. I dati del rilievo illuminotecnico si riferiscono ad apparecchi con corpo bianco (RAL 9016).

HEADQUARTERS & PRODUCTION

planlicht GmbH & Co. KG
6134 Vomp, Austria, Au 25
Tel. +43-5242-71608
Fax +43-5242-71283
info@planlicht.com
www.planlicht.com

IMPRINT

Publisher: planlicht GmbH & Co. KG, Vomp
Creative Direction: Markus Kirchmair, MA
Graphics Design, Photo Retouching: Beatrice Praxmarer, Irina Mirescu
Product photography: Armin Kuprian
Project renderings: viewture.media
Article Number: PLAN-OPHELIA2102





WWW.PLANLICHT.COM