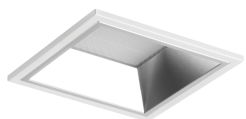


PRODUCT DETAILS



Dimensions



Accessories



NOVEL M

**NOVEL M MATT REF IP40 LED 2700lm/840
1x24W, FIX, RAL 9003**

DOWNLOADS

[Certificates](#)
[Datasheet](#)
[Product sheet](#)
[Installation manual](#)
[IES file](#)
[LDT file](#)
[EEC](#)

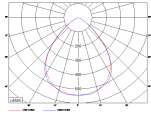
Description

MOUNTING	Ceiling recessed
LIGHT SOURCE	LED
OPTICAL SYSTEM	Matt reflector (MRE)
BEAM ANGLE	80°
LIGHT DISTRIBUTION	Direct
WIRING	Electronic control gear FIX (ECG)
MATERIALS	Diffuser: diamond microprismatic PMMA Housing: sheet steel Reflector: matt anodised aluminium Trim: sheet steel
	Trim: white RAL 9003 (W03)
SURFACE FINISH	
VOLTAGE	220-240 V, 50-60 Hz
POWER FACTOR	> 0,95
NET LUMEN OUTPUT (Ta=25°C)	2700 lm
LUMINOUS FLUX TOLERANCE	+/- 10 %
POWER CONSUMPTION	24 W
SYSTEM EFFICACY	112 lm/W
COLOUR RENDERING INDEX	80 Ra
COLOUR TOLERANCE	3 SDCM
EEC	A++ / A+ / A
PROTECTION CLASS	II
THERMAL MANAGEMENT	Passive
SERVICE LIFETIME (Ta=25°C)	50,000 hours / L80 / B10
AMBIENT OPERATING TEMPERATURE	From -20 °C to +35 °C
IP PROTECTION DEGREE	IP20, optical part IP40
DIMENSIONS (L x W x H)	215 x 215 x 107 mm
OPENING (L x W)	200 x 200 mm
WEIGHT	1,1 kg

AREAS OF APPLICATION

EDUCATION
 HOSPITALITY
 HOUSE AND FLAT

LIDC



HEALTH AND CARE

RETAIL AND PRESENTATION

OFFICE



The manufacturer reserves all rights to make changes in materials and components used in production of lighting fittings.