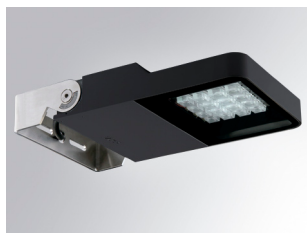


MF235AS830NA



MINI FLUT G2 3500 8WW ASYM ANT.

Description:

Surface mounting outdoor luminaire model MINI FLUT G2 3500 8WW ASYM ANT., LAMP brand. Manufactured in aluminium injection body lacquered in anthracite colour and serigraphed tempered glass. Made of AISI304 inox steel bended axle. Body's low height of 60mm. Model for HI-POWER LED, warm white colour and control gear included. With asymmetric optics. IP66, IK06 protection rating. Insulation class I. Its axle allows swivels between 90° and -30°.

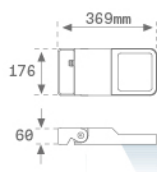
Finish: Textured anthracite

Weight: 4.104 g

IEE : A+

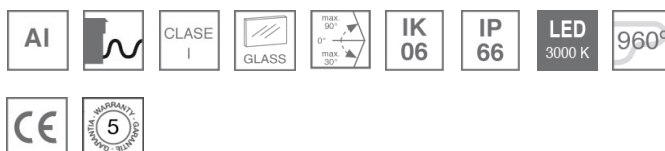
Maximum surface exposed to wind: 0.04 M2

Installation: Surface



TECHNICAL SPECIFICATIONS:

Light output:	2.460 lm	°K :	3000
Plum:	25.7W	CRI :	80
Efficacy:	95,7 lm/w	MacAdam:	4
Type:	HIGH POWER PHILIPS	Power Supply:	220-240V 50/60Hz
LED Lifetime:	50.000 L90 B10	Gear:	Electronic
Power:	23W		



CUSTOM MADE OPTIONS:

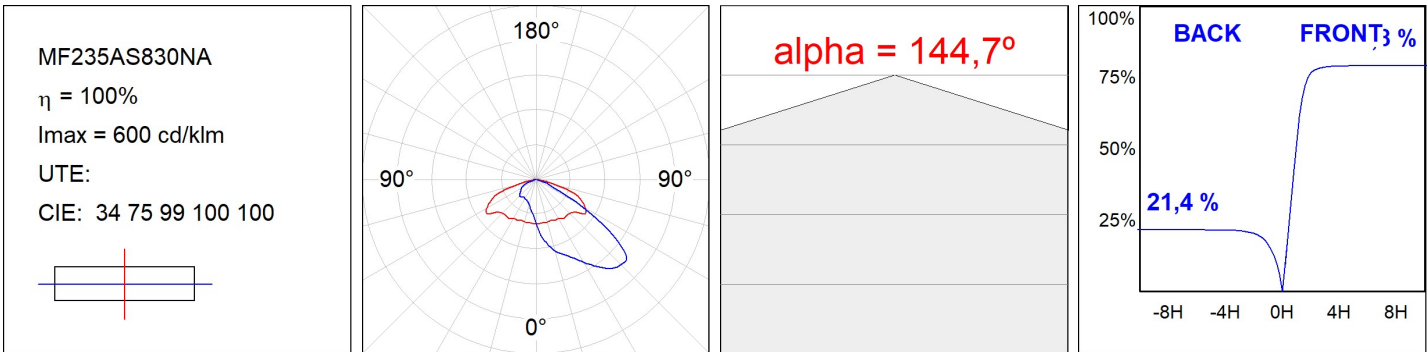


MINI FLUT

MF235AS830NA

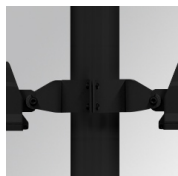
MINI FLUT G2 3500 8WW ASYM ANT.

PHOTOMETRIC DATA :



ACCESORIES :

Support



Product code:

COARDB120A

COARIN120A

Description:

ACC. CO ARM DB 120-130 ANT.

ACC. CO ARM IND 120-130 ANT.



Product code:

COARDB120G

COARIN120G

Description:

ACC. CO ARM DB 120-130 GR.

ACC. CO ARM IND 120-130 GR.



Product code:

COARIN060A

Description:

ACC. CO ARM IND 60-135 ANT.



Product code:

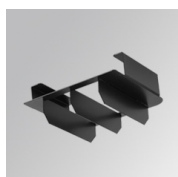
COARIN060G

Description:

ACC. CO ARM IND 60-135 GR.

ACCESORIES :

Optical



Product code:

MFLOASB

Description:

MINI FLUT ACC. ASYM. ANTIGLARE LOUVRES