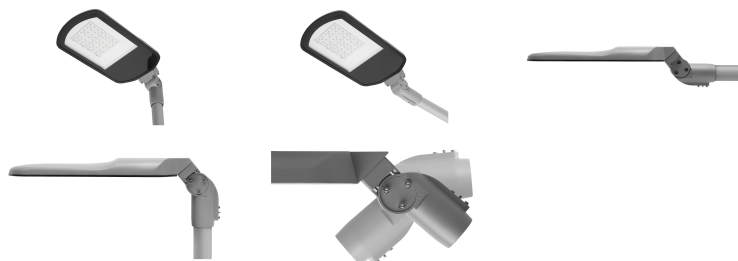




## PRODUCT DETAILS



UPCOMING NEW FAST RUNNER UPDATED PHASE-OUT PRODUCTS



## DOWNLOADS

[Certificates](#)

[Datasheet](#)

[Installation manual](#)

# MEGIN II M

## Description

<b>MOUNTING</b>	Pole top / side entry installation (PMT)
<b>LIGHT SOURCE</b>	LED
<b>OPTICAL SYSTEM</b>	On request L02, L03, L04, L05, L06, L07, L08, L09, L10, L11, L12, L18 Lenses (L01)
<b>LIGHT DISTRIBUTION</b>	Direct
<b>WIRING</b>	External lead-in flexible cable Electronic control gear FIX / DALI / STEP DIM / INT DIM + CONSTANT LUMEN OUTPUT (ECC / EDO / EBC / EPO)
<b>MATERIALS</b>	Cover: PC Frame: sheet steel Housing: die-cast aluminium
<b>SURFACE FINISH</b>	Housing: grey RAL 9006 (G06)
<b>SERVICE LIFETIME (Ta=25°C)</b>	100,000 hours / L90 / B10 (25/35/44/59/71W) 100,000 hours / L80 / B10 (87/122W)
<b>AMBIENT OPERATING TEMPERATURE</b>	From -40 °C to +50 °C

## AREAS OF APPLICATION STREET AND URBAN



## Accessories

---

## List of products

PRODUCT NAME	STATUS	QUICK DOWNLOADS
MEGIN II M (L01) LED 2950lm/740 1x25W, FIX-ECC, RAL 9006	New	<a href="#">RFA</a> / <a href="#">3DS</a> / <a href="#">IES</a> / <a href="#">LDT</a> / <a href="#">CURVE</a> /
MEGIN II M (L01) LED 3950lm/740 1x35W, FIX-ECC, RAL 9006	New	<a href="#">RFA</a> / <a href="#">3DS</a> / <a href="#">IES</a> / <a href="#">LDT</a> / <a href="#">CURVE</a> /
MEGIN II M (L01) LED 4900lm/740 1x44W, FIX-ECC, RAL 9006	New	<a href="#">RFA</a> / <a href="#">3DS</a> / <a href="#">IES</a> / <a href="#">LDT</a> / <a href="#">CURVE</a> /
MEGIN II M (L01) LED 7350lm/740 1x59W, FIX-ECC, RAL 9006	New	<a href="#">RFA</a> / <a href="#">3DS</a> / <a href="#">IES</a> / <a href="#">LDT</a> / <a href="#">CURVE</a> /
MEGIN II M (L01) LED 8750lm/740 1x71W, FIX-ECC, RAL 9006	New	<a href="#">RFA</a> / <a href="#">3DS</a> / <a href="#">IES</a> / <a href="#">LDT</a> / <a href="#">CURVE</a> /
MEGIN II M (L01) LED 10850lm/740 1x87W, FIX-ECC, RAL 9006	New	<a href="#">RFA</a> / <a href="#">3DS</a> / <a href="#">IES</a> / <a href="#">LDT</a> / <a href="#">CURVE</a> /
MEGIN II M (L01) LED 14250lm/740 1x122W, FIX-ECC, RAL 9006	New	<a href="#">RFA</a> / <a href="#">3DS</a> / <a href="#">IES</a> / <a href="#">LDT</a> / <a href="#">CURVE</a> /
MEGIN II M (L01) LED 2800lm/730 1x25W, FIX-ECC, RAL 9006	New	<a href="#">RFA</a> / <a href="#">3DS</a> / <a href="#">IES</a> / <a href="#">LDT</a> / <a href="#">CURVE</a> /
MEGIN II M (L01) LED 7000lm/730 1x59W, FIX-ECC, RAL 9006	New	<a href="#">RFA</a> / <a href="#">3DS</a> / <a href="#">IES</a> / <a href="#">LDT</a> / <a href="#">CURVE</a> /
MEGIN II M (L01) LED 3750lm/730 1x35W, FIX-ECC, RAL 9006	New	<a href="#">RFA</a> / <a href="#">3DS</a> / <a href="#">IES</a> / <a href="#">LDT</a> / <a href="#">CURVE</a> /
MEGIN II M (L01) LED 4600lm/730 1x44W, FIX-ECC, RAL 9006	New	<a href="#">RFA</a> / <a href="#">3DS</a> / <a href="#">IES</a> / <a href="#">LDT</a> / <a href="#">CURVE</a> /
MEGIN II M (L01) LED 8400lm/730 1x71W, FIX-ECC, RAL 9006	New	<a href="#">RFA</a> / <a href="#">3DS</a> / <a href="#">IES</a> / <a href="#">LDT</a> /

		<a href="#">CURVE</a> /
MEGIN II M (L01) LED 10400lm/730 1x87W, FIX-ECC, RAL 9006	New	RFA / 3DS / <a href="#">IES</a> / <a href="#">LDT</a> / <a href="#">CURVE</a> /
MEGIN II M (L01) LED 13650lm/730 1x122W, FIX-ECC, RAL 9006	New	RFA / 3DS / <a href="#">IES</a> / <a href="#">LDT</a> / <a href="#">CURVE</a> /
MEGIN II M (L01) LED 2950lm/740 1x25W, DALI-EDO, RAL 9006	New	RFA / 3DS / <a href="#">IES</a> / <a href="#">LDT</a> / <a href="#">CURVE</a> /
MEGIN II M (L01) LED 3950lm/740 1x35W, DALI-EDO, RAL 9006	New	RFA / 3DS / <a href="#">IES</a> / <a href="#">LDT</a> / <a href="#">CURVE</a> /
MEGIN II M (L01) LED 4900lm/740 1x44W, DALI-EDO, RAL 9006	New	RFA / 3DS / <a href="#">IES</a> / <a href="#">LDT</a> / <a href="#">CURVE</a> /
MEGIN II M (L01) LED 7350lm/740 1x59W, DALI-EDO, RAL 9006	New	RFA / 3DS / <a href="#">IES</a> / <a href="#">LDT</a> / <a href="#">CURVE</a> /
MEGIN II M (L01) LED 8750lm/740 1x71W, DALI-EDO, RAL 9006	New	RFA / 3DS / <a href="#">IES</a> / <a href="#">LDT</a> / <a href="#">CURVE</a> /
MEGIN II M (L01) LED 10850lm/740 1x87W, DALI, RAL 9006	New	RFA / 3DS / <a href="#">IES</a> / <a href="#">LDT</a> / <a href="#">CURVE</a> /
MEGIN II M (L01) LED 2800lm/730 1x25W, DALI-EDO, RAL 9006	New	RFA / 3DS / <a href="#">IES</a> / <a href="#">LDT</a> / <a href="#">CURVE</a> /
MEGIN II M (L01) LED 14250lm/740 1x122W, DALI-EDO, RAL 9006	New	RFA / 3DS / <a href="#">IES</a> / <a href="#">LDT</a> / <a href="#">CURVE</a> /
MEGIN II M (L01) LED 7000lm/730 1x59W, DALI-EDO, RAL 9006	New	RFA / 3DS / <a href="#">IES</a> / <a href="#">LDT</a> / <a href="#">CURVE</a> /
MEGIN II M (L01) LED 3750lm/730 1x35W, DALI-EDO, RAL 9006	New	RFA / 3DS / <a href="#">IES</a> / <a href="#">LDT</a> / <a href="#">CURVE</a> /
MEGIN II M (L01) LED 8400lm/730 1x71W, DALI-EDO, RAL 9006	New	RFA / 3DS / <a href="#">IES</a> / <a href="#">LDT</a> /

		<a href="#">CURVE</a> /
MEGIN II M (L01) LED 4600lm/730 1x44W, DALI-EDO, RAL 9006	New	RFA / 3DS / <a href="#">IES</a> / <a href="#">LDT</a> / <a href="#">CURVE</a> /
MEGIN II M (L01) LED 10400lm/730 1x87W, DALI-EDO, RAL 9006	New	RFA / 3DS / <a href="#">IES</a> / <a href="#">LDT</a> / <a href="#">CURVE</a> /
MEGIN II M (L01) LED 13650lm/730 1x122W, DALI-EDO, RAL 9006	New	RFA / 3DS / <a href="#">IES</a> / <a href="#">LDT</a> / <a href="#">CURVE</a> /
MEGIN II M (L01) LED 2950lm/740 1x25W, STEP DIM-EBC, RAL 9006	New	RFA / 3DS / <a href="#">IES</a> / <a href="#">LDT</a> / <a href="#">CURVE</a> /
MEGIN II M (L01) LED 3950lm/740 1x35W, STEP DIM-EBC, RAL 9006	New	RFA / 3DS / <a href="#">IES</a> / <a href="#">LDT</a> / <a href="#">CURVE</a> /
MEGIN II M (L01) LED 4900lm/740 1x44W, STEP DIM-EBC, RAL 9006	New	RFA / 3DS / <a href="#">IES</a> / <a href="#">LDT</a> / <a href="#">CURVE</a> /
MEGIN II M (L01) LED 7350lm/740 1x59W, STEP DIM-EBC, RAL 9006	New	RFA / 3DS / <a href="#">IES</a> / <a href="#">LDT</a> / <a href="#">CURVE</a> /
MEGIN II M (L01) LED 8750lm/740 1x71W, STEP DIM-EBC, RAL 9006	New	RFA / 3DS / <a href="#">IES</a> / <a href="#">LDT</a> / <a href="#">CURVE</a> /
MEGIN II M (L01) LED 10850lm/740 1x87W, STEP DIM-EBC, RAL 9006	New	RFA / 3DS / <a href="#">IES</a> / <a href="#">LDT</a> / <a href="#">CURVE</a> /
MEGIN II M (L01) LED 14250lm/740 1x122W, STEP DIM-EBC, RAL 9006	New	RFA / 3DS / <a href="#">IES</a> / <a href="#">LDT</a> / <a href="#">CURVE</a> /
MEGIN II M (L01) LED 2800lm/730 1x25W, STEP DIM-EBC, RAL 9006	New	RFA / 3DS / <a href="#">IES</a> / <a href="#">LDT</a> / <a href="#">CURVE</a> /
MEGIN II M (L01) LED 7000lm/730 1x59W, STEP DIM-EBC, RAL 9006	New	RFA / 3DS / <a href="#">IES</a> / <a href="#">LDT</a> / <a href="#">CURVE</a> /
MEGIN II M (L01) LED 4600lm/730 1x44W, STEP DIM-EBC, RAL 9006	New	RFA / 3DS / <a href="#">IES</a> / <a href="#">LDT</a> /

		<a href="#">CURVE</a> /
MEGIN II M (L01) LED 3750lm/730 1x35W, STEP DIM-EBC, RAL 9006	New	RFA / 3DS / <a href="#">IES</a> / <a href="#">LDT</a> / <a href="#">CURVE</a> /
MEGIN II M (L01) LED 8400lm/730 1x71W, STEP DIM-EBC, RAL 9006	New	RFA / 3DS / <a href="#">IES</a> / <a href="#">LDT</a> / <a href="#">CURVE</a> /
MEGIN II M (L01) LED 10400lm/730 1x87W, STEP DIM-EBC, RAL 9006	New	RFA / 3DS / <a href="#">IES</a> / <a href="#">LDT</a> / <a href="#">CURVE</a> /
MEGIN II M (L01) LED 13650lm/730 1x122W, STEP DIM-EBC, RAL 9006	New	RFA / 3DS / <a href="#">IES</a> / <a href="#">LDT</a> / <a href="#">CURVE</a> /
MEGIN II M (L01) LED 2950lm/740 1x25W, INT DIM-EPO, RAL 9006	New	RFA / 3DS / <a href="#">IES</a> / <a href="#">LDT</a> / <a href="#">CURVE</a> /
MEGIN II M (L01) LED 3950lm/740 1x35W, INT DIM-EPO, RAL 9006	New	RFA / 3DS / <a href="#">IES</a> / <a href="#">LDT</a> / <a href="#">CURVE</a> /
MEGIN II M (L01) LED 4900lm/740 1x44W, INT DIM-EPO, RAL 9006	New	RFA / 3DS / <a href="#">IES</a> / <a href="#">LDT</a> / <a href="#">CURVE</a> /
MEGIN II M (L01) LED 7350lm/740 1x59W, INT DIM-EPO, RAL 9006	New	RFA / 3DS / <a href="#">IES</a> / <a href="#">LDT</a> / <a href="#">CURVE</a> /
MEGIN II M (L01) LED 8750lm/740 1x71W, INT DIM-EPO, RAL 9006	New	RFA / 3DS / <a href="#">IES</a> / <a href="#">LDT</a> / <a href="#">CURVE</a> /
MEGIN II M (L01) LED 10850lm/740 1x87W, INT DIM-EPO, RAL 9006	New	RFA / 3DS / <a href="#">IES</a> / <a href="#">LDT</a> / <a href="#">CURVE</a> /
MEGIN II M (L01) LED 14250lm/740 1x122W, INT DIM-EPO, RAL 9006	New	RFA / 3DS / <a href="#">IES</a> / <a href="#">LDT</a> / <a href="#">CURVE</a> /
MEGIN II M (L01) LED 2800lm/730 1x25W, INT DIM-EPO, RAL 9006	New	RFA / 3DS / <a href="#">IES</a> / <a href="#">LDT</a> / <a href="#">CURVE</a> /
MEGIN II M (L01) LED 7000lm/730 1x59W, INT DIM-EPO, RAL 9006	New	RFA / 3DS / <a href="#">IES</a> / <a href="#">LDT</a> /

		<a href="#">CURVE</a> /
MEGIN II M (L01) LED 3750lm/730 1x35W, INT DIM-EPO, RAL 9006	New	RFA / 3DS / <a href="#">IES</a> / <a href="#">LDT</a> / <a href="#">CURVE</a> /
MEGIN II M (L01) LED 4600lm/730 1x44W, INT DIM-EPO, RAL 9006	New	RFA / 3DS / <a href="#">IES</a> / <a href="#">LDT</a> / <a href="#">CURVE</a> /
MEGIN II M (L01) LED 8400lm/730 1x71W, INT DIM-EPO, RAL 9006	New	RFA / 3DS / <a href="#">IES</a> / <a href="#">LDT</a> / <a href="#">CURVE</a> /
MEGIN II M (L01) LED 10400lm/730 1x87W, INT DIM-EPO, RAL 9006	New	RFA / 3DS / <a href="#">IES</a> / <a href="#">LDT</a> / <a href="#">CURVE</a> /
MEGIN II M (L01) LED 13650lm/730 1x122W, INT DIM-EPO, RAL 9006	New	RFA / 3DS / <a href="#">IES</a> / <a href="#">LDT</a> / <a href="#">CURVE</a> /

The manufacturer reserves all rights to make changes in materials and components used in production of lighting fittings.