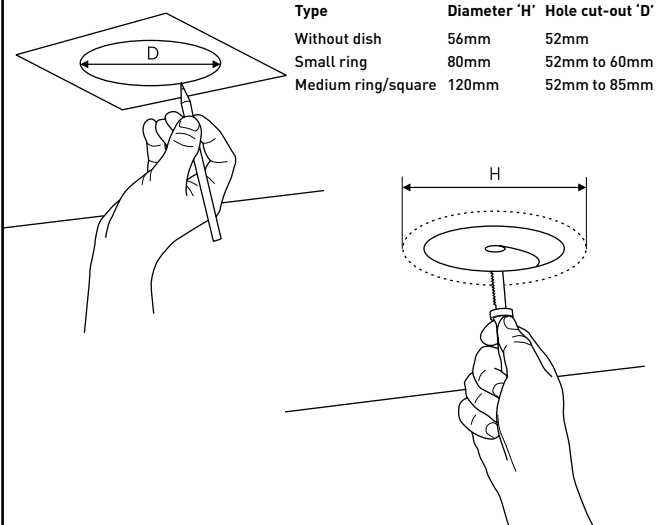
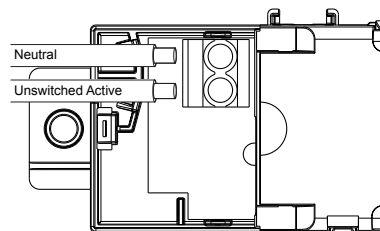


### Ceiling cut out template – recessed installation

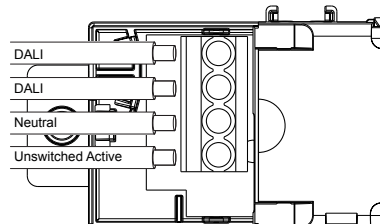


### Mains supply connection – recessed installation

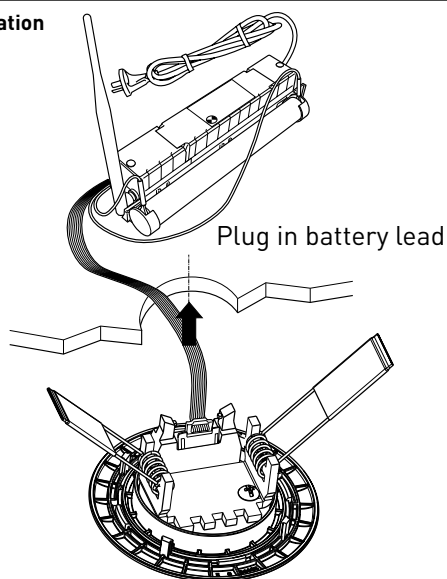
For stand alone and Axiom models, supplied complete with flex and plug.



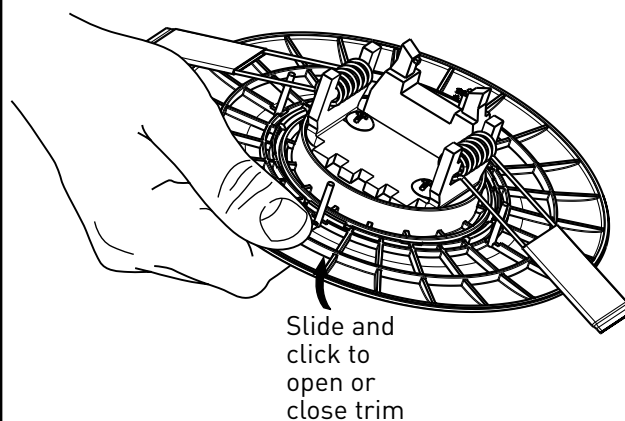
For DALI models



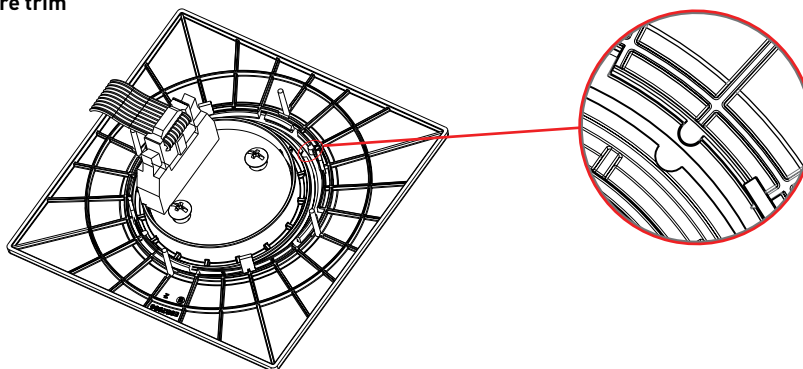
### Recessed installation



### Changing trim size for non corridor models

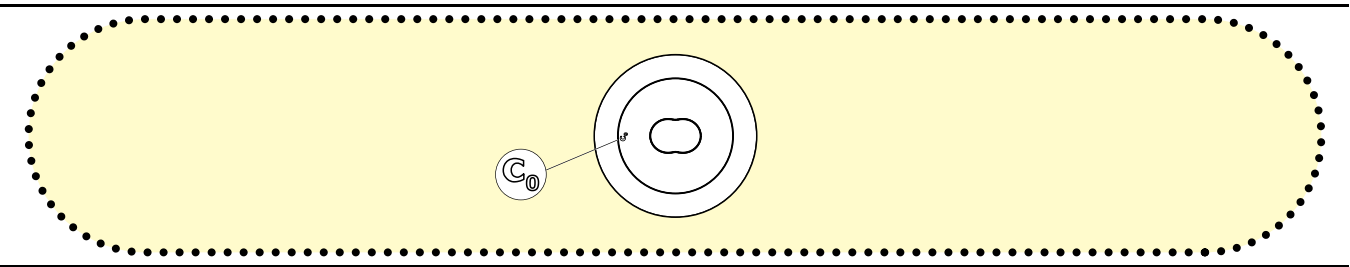


### Changing trim size for corridor models with square trim



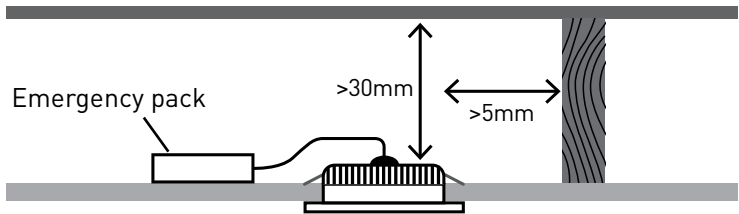
Ensure locators are in position prior to securing the square trim

Corridor Satellite installation



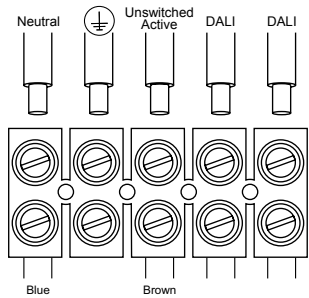
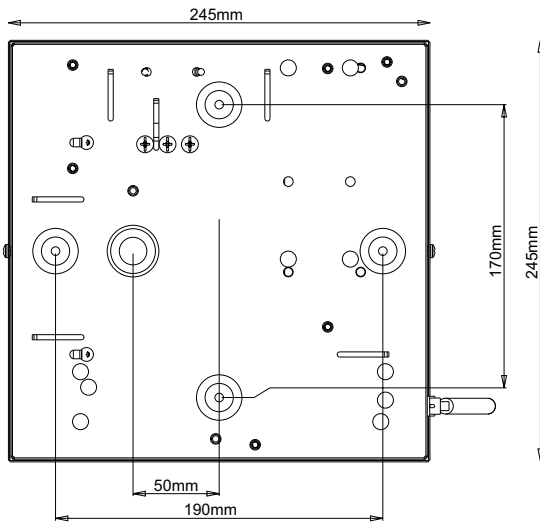
**NOTE:** Ensure the “C<sub>0</sub>” symbol is parallel to the wall

Minimum ceiling void



**Note:** Ensure emergency pack is above insulation

Surface mount installation – Direct onto the ceiling using mounting holes shown below



DALI terminal connection is applicable to DALI models only.

