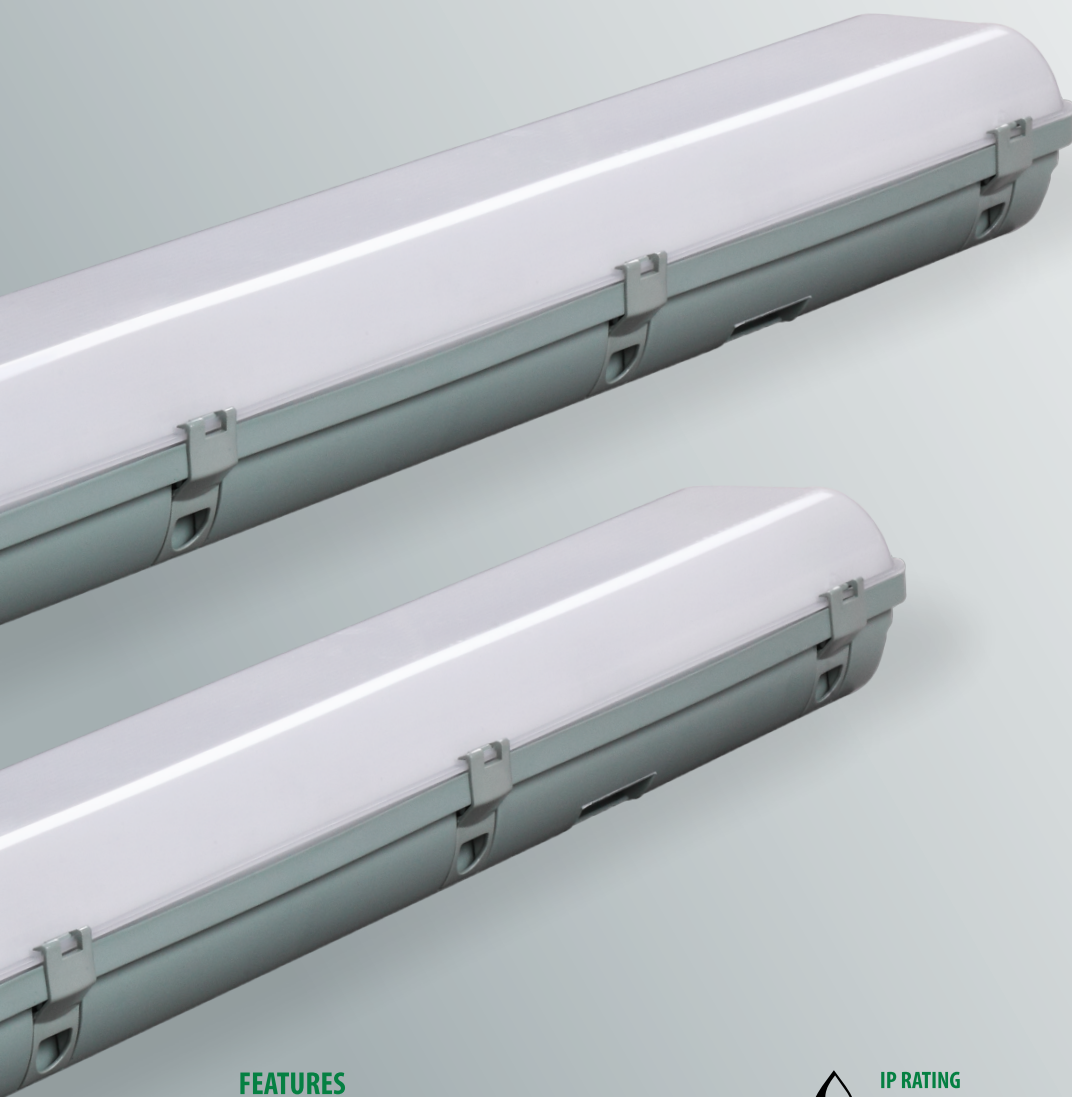




CLAYMORE LITE IP65

LED EMERGENCY WIDE BODY BATTENS



FEATURES

- Fully compliant (AS/NZS 2293)
- Lithium batteries (LiFePO4)
- Complete with stainless steel clip
- LED strips



IP RATING

Ingress protection IP65.



SINGLE POINT UNIT

Out of the box works as a SPU.



WALL / SURFACE MOUNT

Can easily be mounted on the wall or ceiling.



IK RATING

Protection against mechanical impact.

ORDERING INFORMATION

| SKU | PRODUCT CODE | DESCRIPTION | PRODUCT NO. | CARTON QTY |
|--------|---------------------------|---|---------------|------------|
| I 2396 | EV-24W-WP-LED-EM-LITE | Claymore Lite 24W Twin 600mm LED Emergency IP65 Weatherproof wide body batten | 9336462123966 | 4 |
| I 1262 | EV-24W-WP-LED-EM-LITE-F&P | Claymore Lite 24W Twin 600mm LED Emergency IP65 Weatherproof wide body batten c/w F&P | 9336462112625 | 4 |

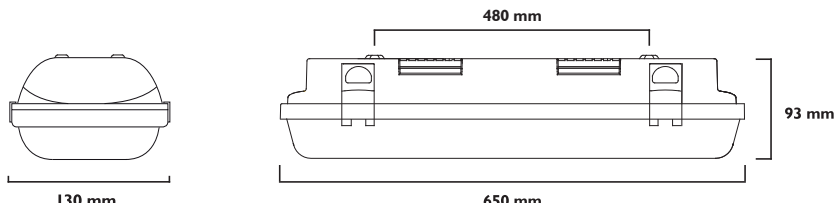
OPERATIONAL INFORMATION

| GENERAL | | | | BATTERY | |
|---------------------|----------|-----------------|---|-----------------|----------------|
| Voltage | 220-240V | Emergency class | C ₀ :D40, C ₉₀ :D32 | Wiring | Terminal block |
| Frequency | 50Hz | Duration | 90/120 min | Battery type | LiFePO4 |
| Wattage | 24W | IP Rating | IP65 | Battery voltage | 6.4V |
| Class | I | IK Rating | IK08 | Battery code | 01302 |
| Working temp. range | 0 - 35° | Lumens | 24W 2280lm | Charging time | 16 Hours |
| CCT | 4000K | Lifetime | L70 (9K) > 54,000 | Charger type | Variable |
| | | | | Mounting type | Surface mount |
| | | | | Warranty | 3 Years |

CONSTRUCTION AND DIMENSIONS

| | |
|------------------|---------------------|
| BODY | PC |
| GEAR TRAY | Powder coated steel |
| DIFFUSER | PC |

CLAYMORE BATTEN



The drawing shows two views of the Claymore Batten. The front view on the left indicates a width of 130 mm. The side view on the right indicates a total length of 650 mm, a mounting bracket spacing of 480 mm, and a height of 93 mm.

ACCESSORIES AND SPARE PARTS

| CODE | PRODUCT CODE | PRODUCT NUMBER | DESCRIPTION |
|-------|-------------------------|----------------|--|
| 01302 | EV-1500MAH-6.4V-LIFEP04 | 9336462013038 | 1500mAh 6.4V 2 Cell LiFePO4 Battery |
| 15170 | ZC-MW-BATTEN | 9666462151709 | Microwave sensor 12m range, batten kit, IP65 |
| 11465 | EV-SS316-WP-CLIPS | 9336462114650 | Ektor vandal resistant stainless steel 316 clips / screw / allen key-kit (10 pack) |

Datasheet is subject to change without notice

Last updated: 13 January 2020_V1.3